



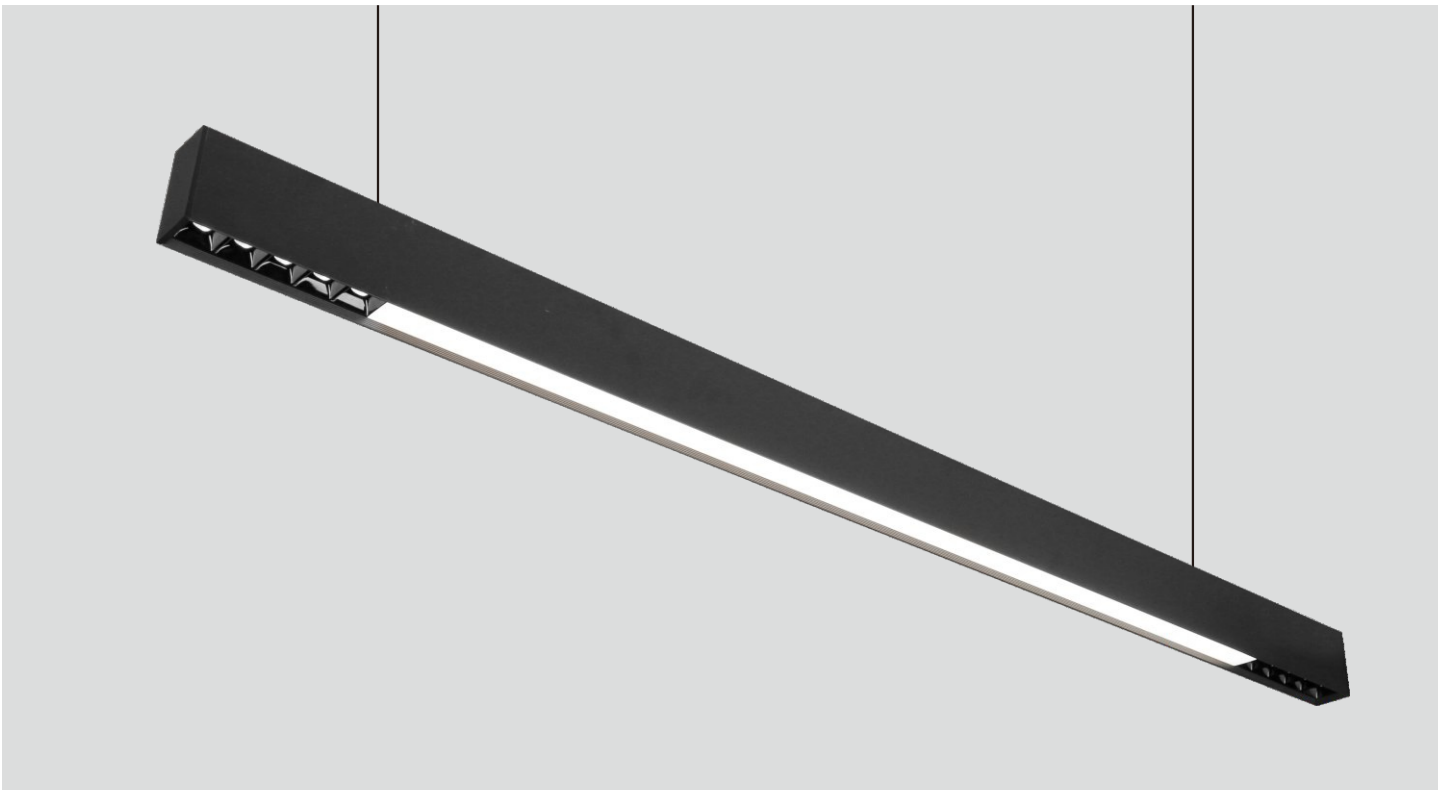
CREATIVE LIGHTING DESIGN AND SOLUTIONS

Tel:+263(242)369674 Ph:+263774924484 E:info@ecolighting.co.zw

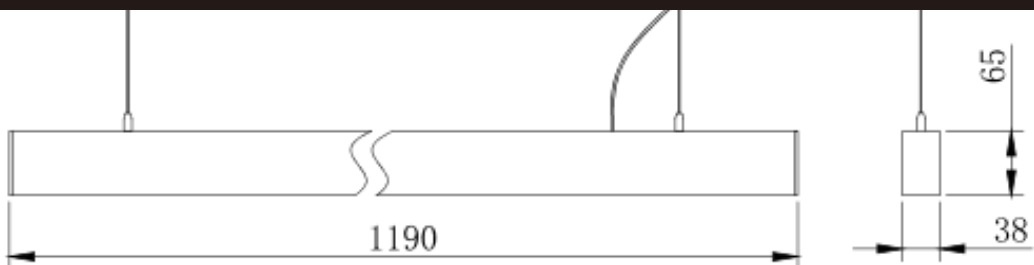
A:14 Westcott Rd Mt Pleasant Harareasant, Harare



ALUMINUM OFFICE LIGHTING



Overall Dimension



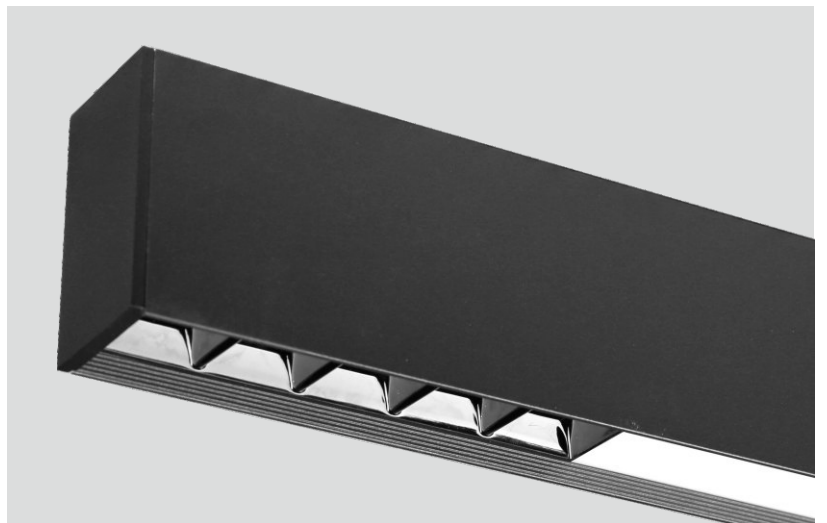
Model:ECO-CP3-1200x38x65mm

Electricity Parameter		Ray Parameter	
Input Power	30W(Or 38W)	LED Quantity	2835:180x0.2W+3030 10x1W
Input Voltage	AC220-240V	Color Temperatur	4000K
Input Voltage	50/60Hz	Led Initial Flux	1350Lm
Input Voltage	≥ 0.95	Luminous Efficiency	45Lm/W
Input Voltage	85%	Color Rendering Index	Ra > 80
		Luminous Anlge	120°+ 15°/30°/45°

Lamp Specs			
Lamp Material	Alu.	Overall Dimension	1190x38x65mm
lampshade Material	PC	IP Grade	IP20
Lamp Colour	Black/White	Working Temperature	-20°C~50°C
Power line	0.5mm ²	Working Life-span	20000h
Installation Size	N/A	Driver	3AAAConstantCurrent
Lamp Weight	1.6Kg	LED Chips	SMD2835/SMD3030

Remarks : Customizable wide voltage driver/customizable color

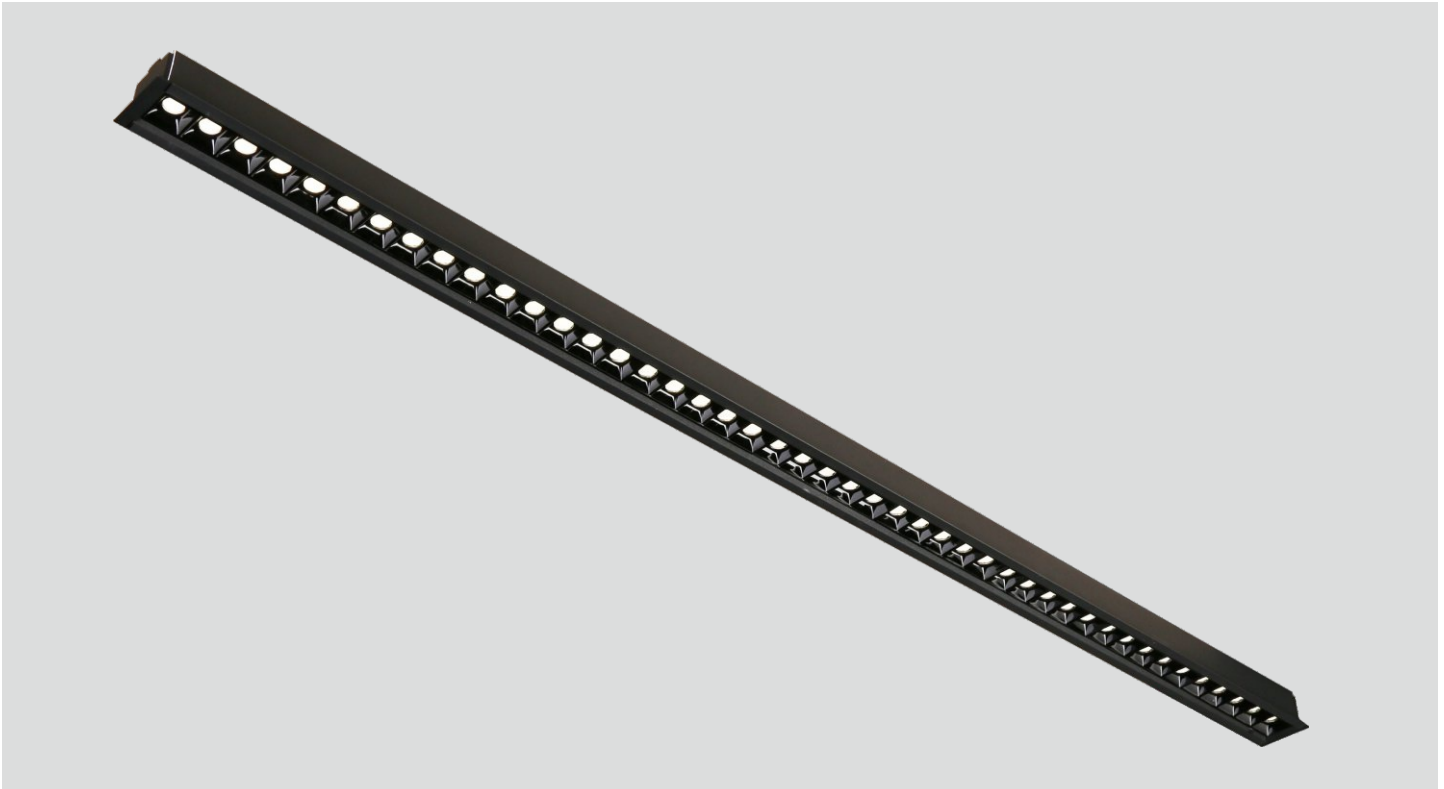
Efficient PC/reflector match high quality integrated optical lens, UGR(UGR<16), precision light control



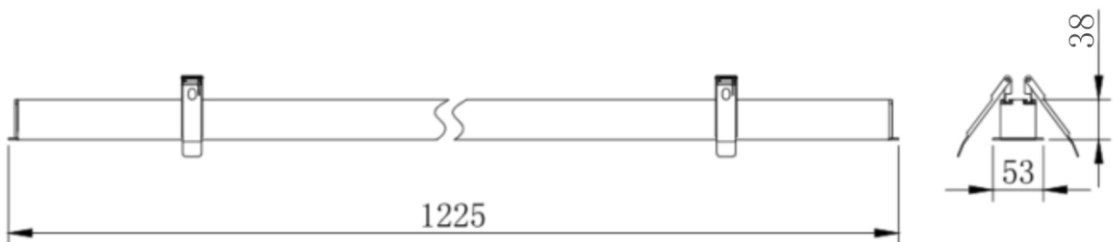
Applications:
Offices and workspaces, conference and training rooms,educational institutions,receptions ,supermarkets(cashiers desks and paths),directional light from low heights of up to 5m/16.4'



ALUMINUM OFFICE LIGHTING



Overall Dimension



Model:ECO-CP9-1200x53x38mm

Electricity Parameter		Ray Parameter	
Input Power	36W(OR 30W)	LED Quantity	3030/45x1W
Input Voltage	AC220-240V	Color Temperatur	4000K
Input Voltage	50/60Hz	Led Initial Flux	2600Lm
Input Voltage	≥ 0.95	Luminous Efficiency	70Lm/W
Input Voltage	85%	Color Rendering Index	Ra > 80
		Luminous Anlge	15°/30°/45°

Lamp Specs			
Lamp Material	Alu.	Overall Dimension	1225x53x38mm
lampshade Material	PC	IP Grade	IP20
Lamp Colour	Black/White	Working Temperature	-20°C~50°C
Power line	0.5mm ²	Working Life-span	20000h
Installation Size	1210x45mm	Driver	3AAAConstantCurrent
Lamp Weight	1.4Kg	LED Chips	

Remarks : Customizable wide voltage driver/customizable color



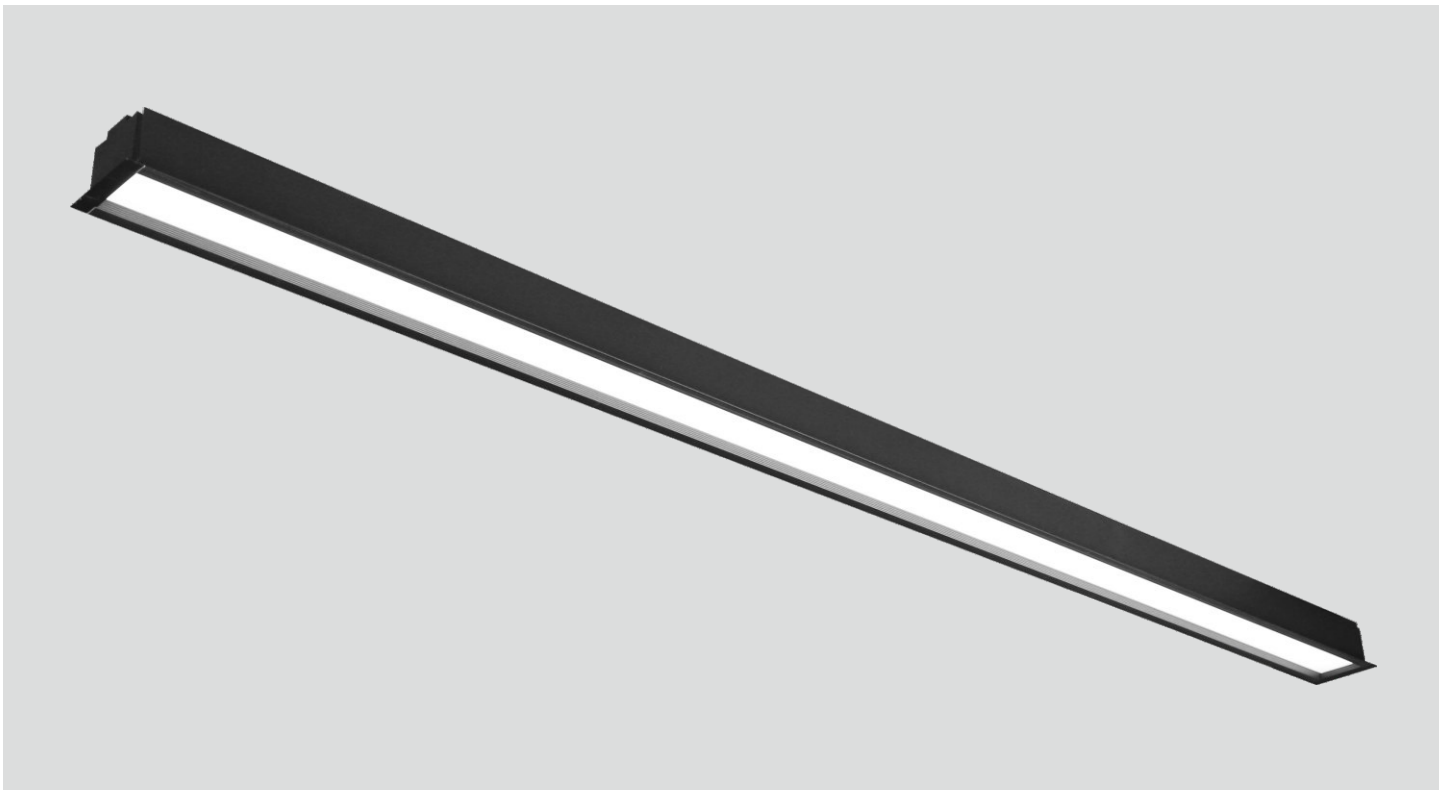
Efficient PC/reflector match high quality integrated optical lens, UGR(UGR<16), precision light control



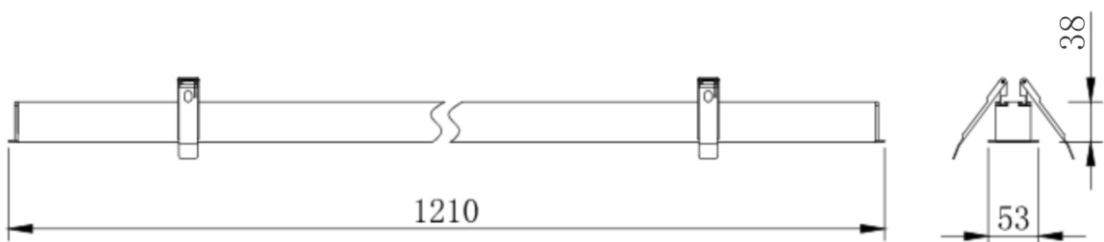
Applications:
Offices and workspaces, conference and training rooms,educational institutions,receptions ,supermarkets(cashiers desks and paths),directional light from low heights of up to 5m/16.4'



ALUMINUM OFFICE LIGHTING



Overall Dimension



Model:ECO-CP1-1200x53x38mm

Electricity Parameter		Ray Parameter	
Input Power	28W	LED Quantity	2835/144x0.2W
Input Voltage	AC220-240V	Color Temperatur	4000K
Input Voltage	50/60Hz	Led Initial Flux	1100Lm
Input Voltage	≥ 0.95	Luminous Efficiency	40Lm/W
Input Voltage	85%	Color Rendering Index	Ra > 80
		Luminous Anlge	120°

Lamp Specs			
Lamp Material	Alu.	Overall Dimension	1210x53x38mm
lampshade Material	PC	IP Grade	IP20
Lamp Colour	Black/White	Working Temperature	-20°C~50°C
Power line	0.5mm ²	Working Life-span	20000h
Installation Size	1200x45mm	Driver	3AAAConstantCurrent
Lamp Weight	1.3Kg	LED Chips	鸿利HongLiSMD2835

Remarks : Customizable wide voltage driver/customizable color



High brightness, uniform illumination, soft light



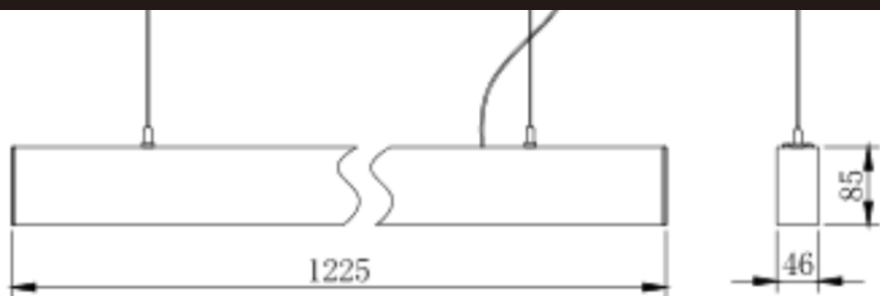
Applications:
Offices and workspaces, conference and training rooms,educational institutions,receptions ,supermarkets(cashiers desks and paths),directional light from low heights of up to 5m/16.4'



ALUMINUM OFFICE LIGHTING



Overall Dimension



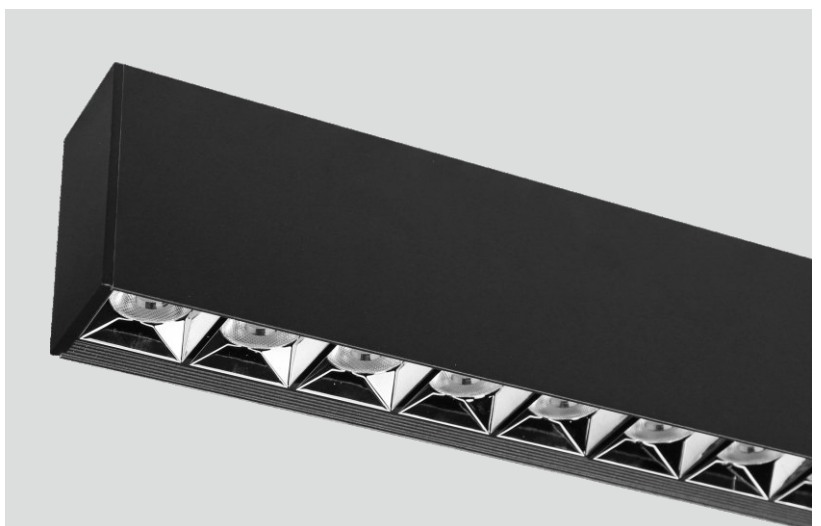
Model:ECO-CP5/1200x46x85mm

Electricity Parameter		Ray Parameter	
Input Power	30W(OR 24W/36W)	LED Quantity	2835 : 90x0.2W+5050 : 20x5W
Input Voltage	AC220-240V	Color Temperatur	4000K
Input Voltage	50/60Hz	Led Initial Flux	2250Lm
Input Voltage	≥ 0.95	Luminous Efficiency	75Lm/W
Input Voltage	85%	Color Rendering Index	Ra > 80
		Luminous Anlge	120°+ 12°/24°38° (50°/50°x50°/35x70°/70°x70°)

Lamp Specs			
Lamp Material	Alu.	Overall Dimension	1225x46x85mm
lampshade Material	PC	IP Grade	IP20
Lamp Colour	Black/White	Working Temperature	-20°C~50°C
Power line	0.5mm ²	Working Life-span	20000h
Installation Size	N/A	Driver	3AAAConstantCurrent
Lamp Weight	2.8Kg	LED Chips	

Remarks : Customizable wide voltage driver/customizable color

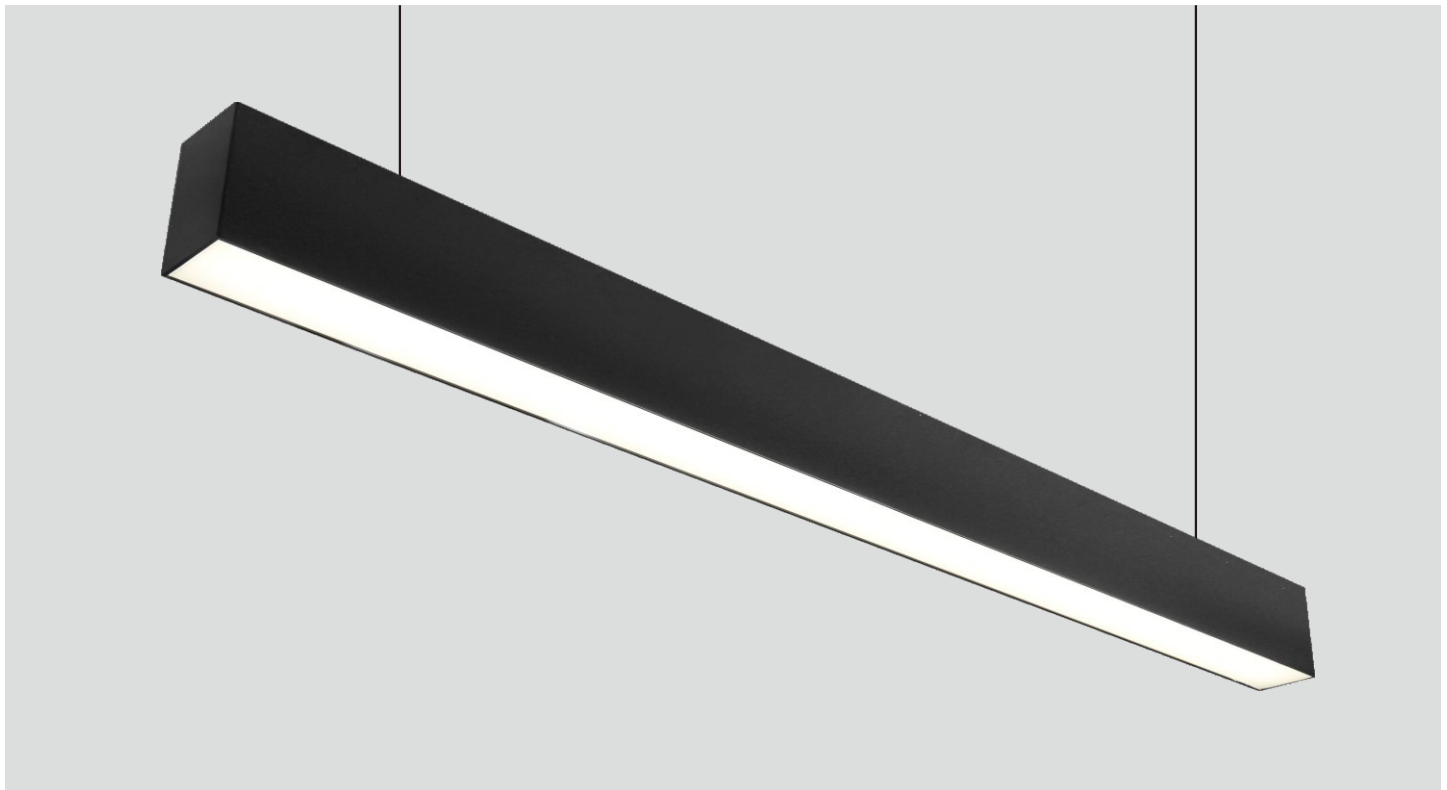
Efficient PC/reflector match high quality integrated optical lens, UGR(UGR<16), precision light control



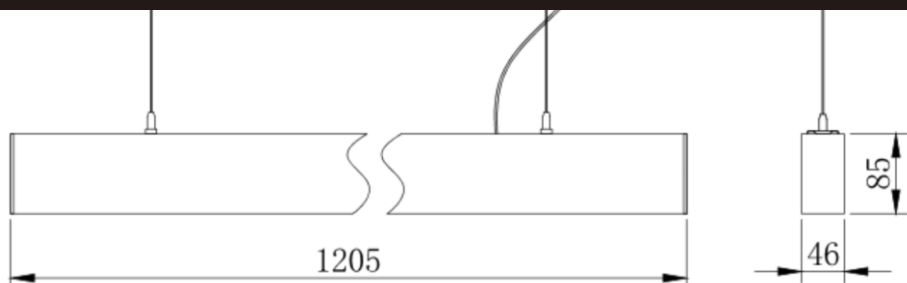
Applications:
Offices and workspaces, conference and training rooms,educational institutions,receptions ,supermarkets(cashiers desks and paths),directional light from low heights of up to 5m/16.4'



ALUMINUM OFFICE LIGHTING



Overall Dimension



Model:ECO-CP1/1200x46x85mm

Electricity Parameter		Ray Parameter	
Input Power	28W	LED Quantity	2835 : 144x0.2W
Input Voltage	AC220-240V	Color Temperatur	4000K
Input Voltage	50/60Hz	Led Initial Flux	1100Lm
Input Voltage	≥ 0.95	Luminous Efficiency	40Lm/W
Input Voltage	85%	Color Rendering Index	Ra > 80
		Luminous Anlge	120°

Lamp Specs			
Lamp Material	Alu.	Overall Dimension	1205x46x85mm
lampshade Material	PC	IP Grade	IP20
Lamp Colour	Black/White	Working Temperature	-20°C~50°C
Power line	0.5mm ²	Working Life-span	20000h
Installation Size	N/A	Driver	3AAAConstantCurrent
Lamp Weight	2.4Kg	LED Chips	鸿利HongLiSMD2835

Remarks : Customizable wide voltage driver/customizable color

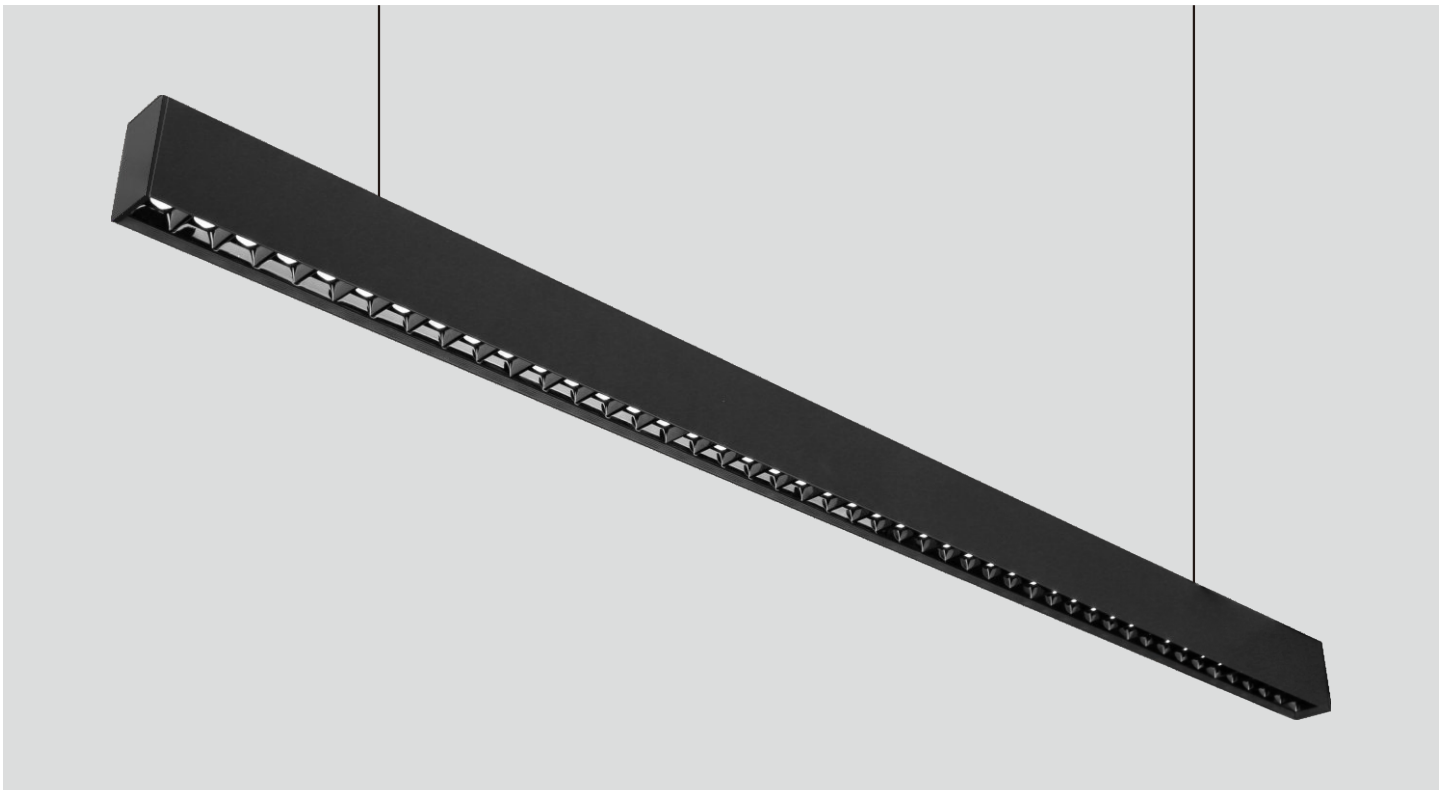
High brightness, uniform illumination, soft light



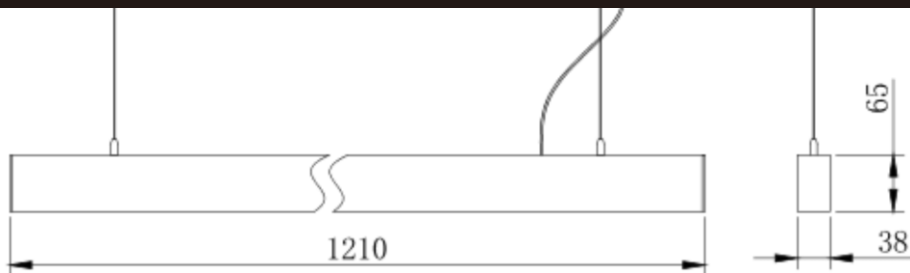
Applications:
 Offices and workspaces, conference and training rooms,educational institutions,receptions ,supermarkets(cashiers desks and paths),directional light from low heights of up to 5m/16.4'



ALUMINUM OFFICE LIGHTING



Overall Dimension



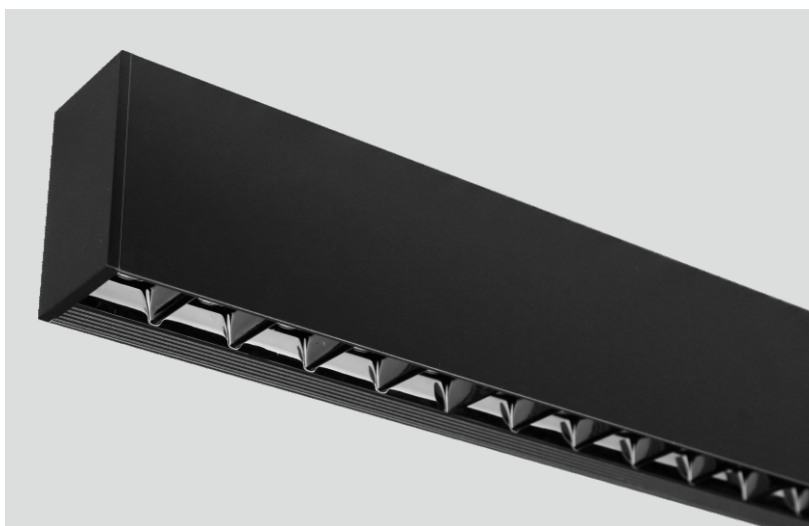
Model:ECO-CP9/1200x38x65mm

Electricity Parameter		Ray Parameter	
Input Power	38W(Or 30W)	LED Quantity	3030:45x1W
Input Voltage	AC220-240V	Color Temperatur	4000K
Input Voltage	50/60Hz	Led Initial Flux	2650Lm
Input Voltage	≥ 0.95	Luminous Efficiency	70Lm/W
Input Voltage	85%	Color Rendering Index	Ra > 80
		Luminous Anlge	

Lamp Specs			
Lamp Material	Alu.	Overall Dimension	1210x38x65mm
lampshade Material	PC	IP Grade	IP20
Lamp Colour	Black/White	Working Temperature	-20°C~50°C
Power line	0.5mm ²	Working Life-span	20000h
Installation Size	N/A	Driver	3AAAConstantCurrent
Lamp Weight	1.7Kg	LED Chips	欧司朗SMD3030

Remarks : Customizable wide voltage driver/customizable color

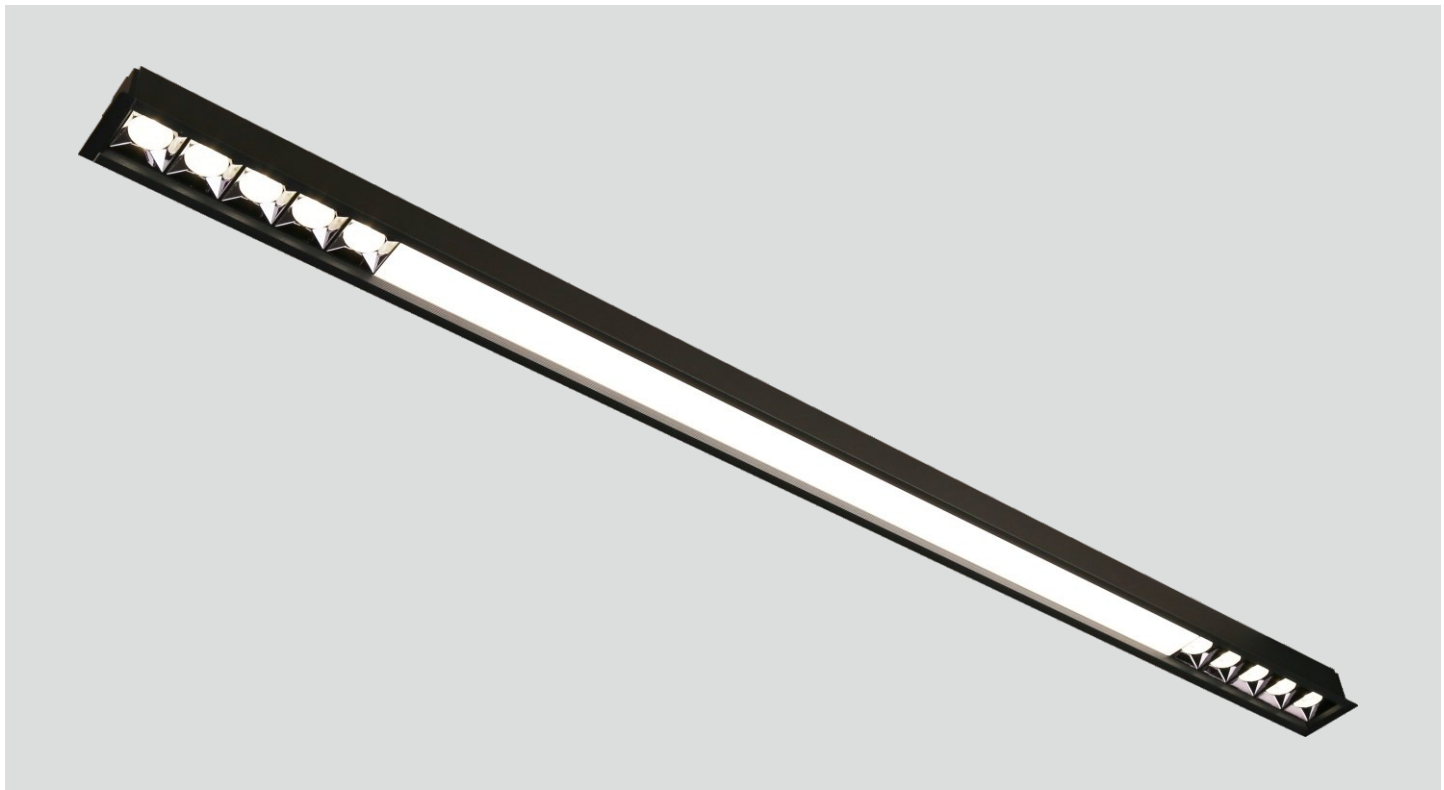
Efficient PC/reflector match high quality integrated optical lens, UGR(UGR<16), precision light control



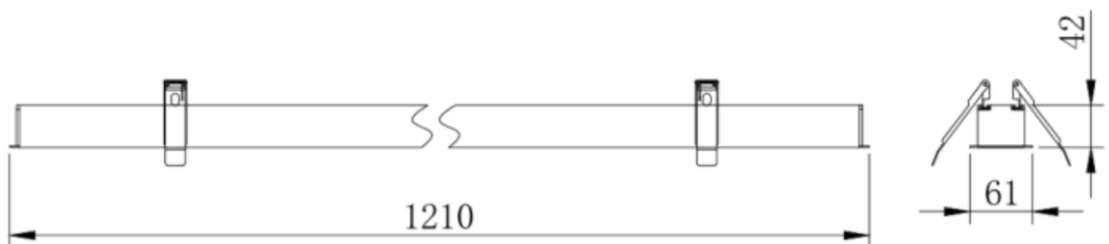
Applications:
Offices and workspaces, conference and training rooms,educational institutions,receptions ,supermarkets(cashiers desks and paths),directional light from low heights of up to 5m/16.4'



ALUMINUM OFFICE LIGHTING



Overall Dimension



Model:ECO-CP3/1200x61x42mm

Electricity Parameter		Ray Parameter	
Input Power	30W(Or 24W/36W)	LED Quantity	2835 : 160X0.2W+5050:10x5W
Input Voltage	AC220-240V	Color Temperatur	4000K
Input Voltage	50/60Hz	Led Initial Flux	2100Lm
Input Voltage	≥ 0.95	Luminous Efficiency	70Lm/W
Input Voltage	85%	Color Rendering Index	Ra > 80

Lamp Specs			
Lamp Material	Alu.	Overall Dimension	1210x61x42mm
lampshade Material	PC	IP Grade	IP20
Lamp Colour	Black/White	Working Temperature	-20°C~50°C
Power line	0.5mm ²	Working Life-span	20000h
Installation Size	1200x50mm	Driver	3AAAConstantCurrent
Lamp Weight	1.7Kg	LED Chips	SMD2835/SMD5050

Remarks : Customizable wide voltage driver/customizable color

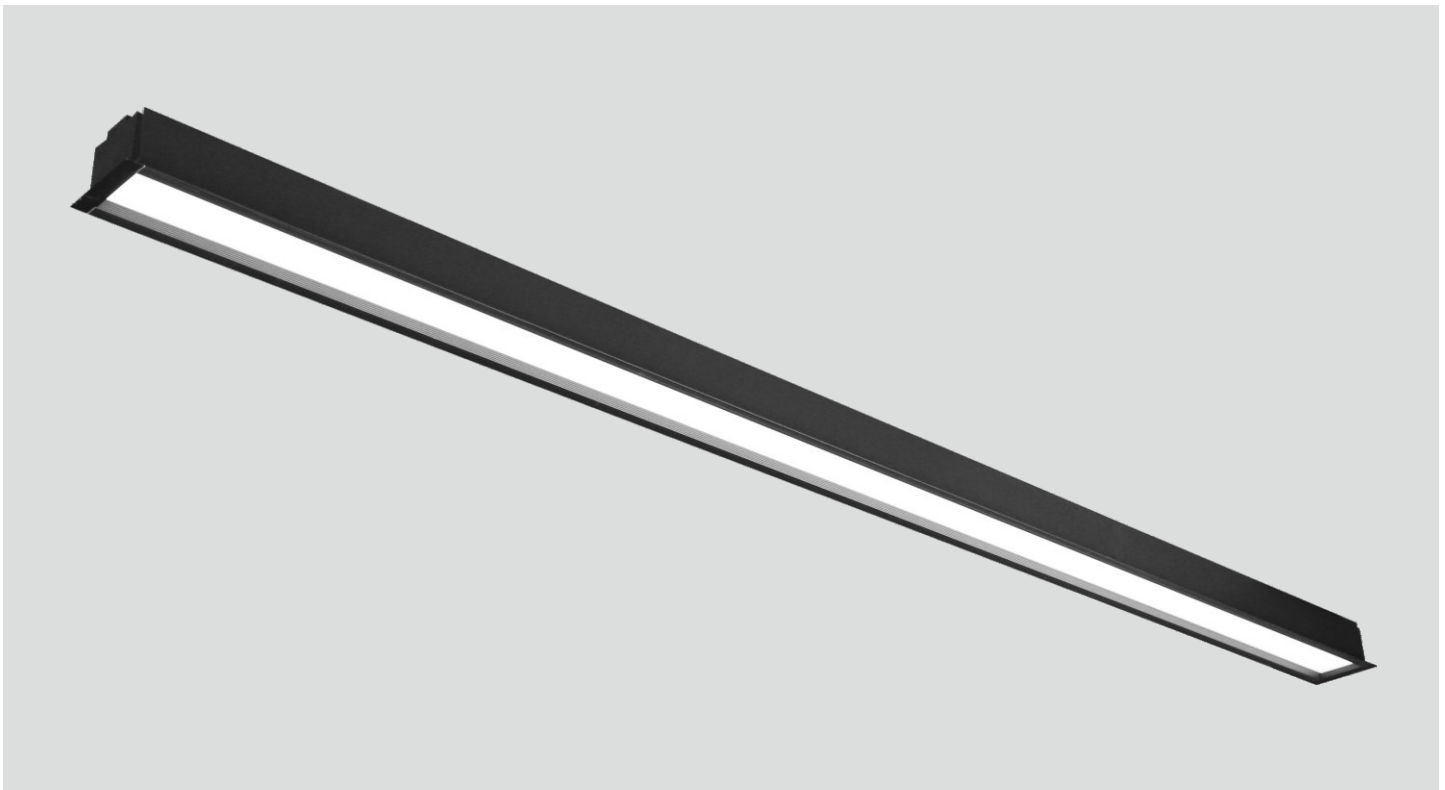
Efficient PC/reflector match high quality integrated optical lens, UGR(UGR<16), precision light control



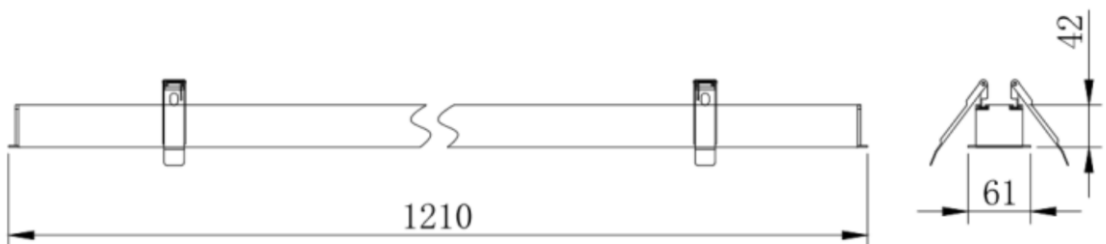
Applications:
Offices and workspaces, conference and training rooms, educational institutions, receptions ,supermarkets(cashiers desks and paths),directional light from low heights of up to 5m/16.4'



ALUMINUM OFFICE LIGHTING



Overall Dimension



Model:ECO-CP1-1200x61x42mm

Electricity Parameter		Ray Parameter	
Input Power	28W	LED Quantity	2835:144x0.2W
Input Voltage	AC220-240V	Color Temperatur	4000K
Input Voltage	50/60Hz	Led Initial Flux	1250Lm
Input Voltage	≥ 0.95	Luminous Efficiency	40Lm/W
Input Voltage	85%	Color Rendering Index	Ra > 80
		Luminous Anlge	120°

Lamp Specs			
Lamp Material	Alu.	Overall Dimension	1210x61x42mm
lampshade Material	PC	IP Grade	IP20
Lamp Colour	Black/White	Working Temperature	-20°C~50°C
Power line	0.5mm ²	Working Life-span	20000h
Installation Size	1200x50mm	Driver	3AAAConstantCurrent
Lamp Weight	1.5Kg	LED Chips	SMD2835

Remarks : Customizable wide voltage driver/customizable color



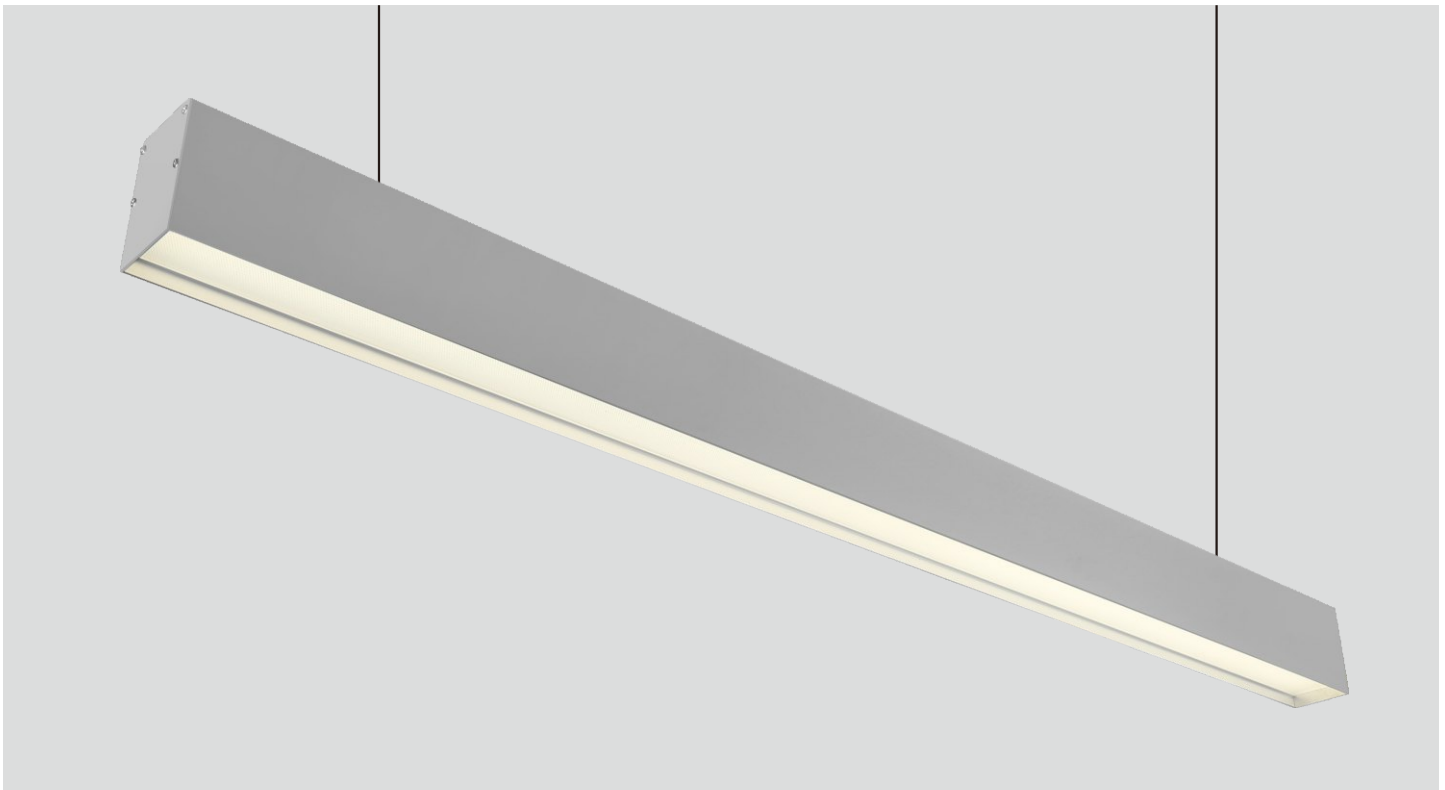
High brightness, uniform illumination, soft light



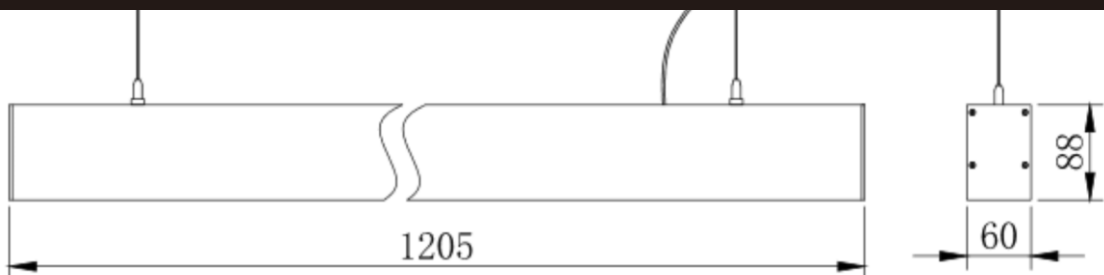
Applications:
 Offices and workspaces, conference and training rooms, educational institutions, receptions ,supermarkets(cashiers desks and paths),directional light from low heights of up to 5m/16.4'



ALUMINUM OFFICE LIGHTING



Overall Dimension

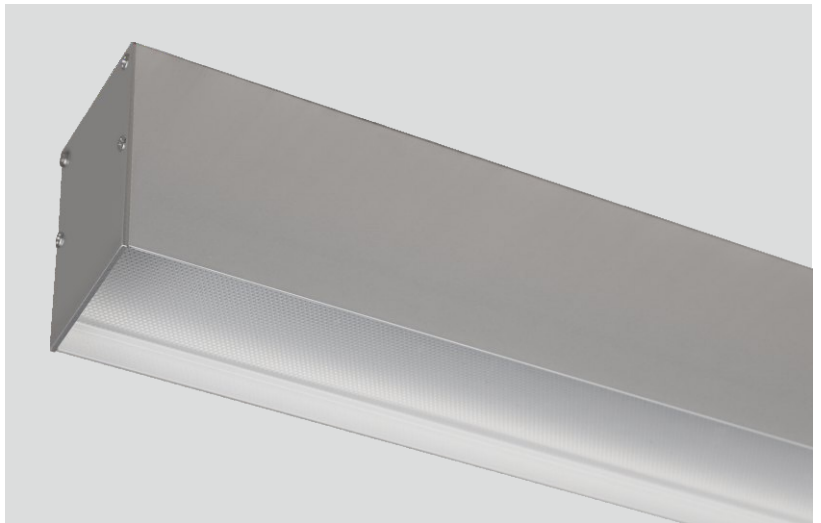


Model:ECO-CP10/1200x60x88mm

Electricity Parameter		Ray Parameter	
Input Power	28W	LED Quantity	2835灯珠144颗x0.2W
Input Voltage	AC220-240V	Color Temperatur	4000K
Input Voltage	50/60Hz	Led Initial Flux	1250Lm
Input Voltage	≥ 0.95	Luminous Efficiency	45Lm/W
Input Voltage	85%	Color Rendering Index	Ra > 80

Lamp Specs			
Lamp Material	Alu.	Overall Dimension	1205x60x88mm
lampshade Material	PS	IP Grade	IP20
Lamp Colour	Black/White	Working Temperature	-20°C~50°C
Power line	0.5mm ²	Working Life-span	20000h
Installation Size	N/A	Driver	3AAAConstantCurrent
Lamp Weight	2.1Kg	LED Chips	SMD2835

Remarks : Customizable wide voltage driver/customizable color



High brightness, uniform illumination, soft light



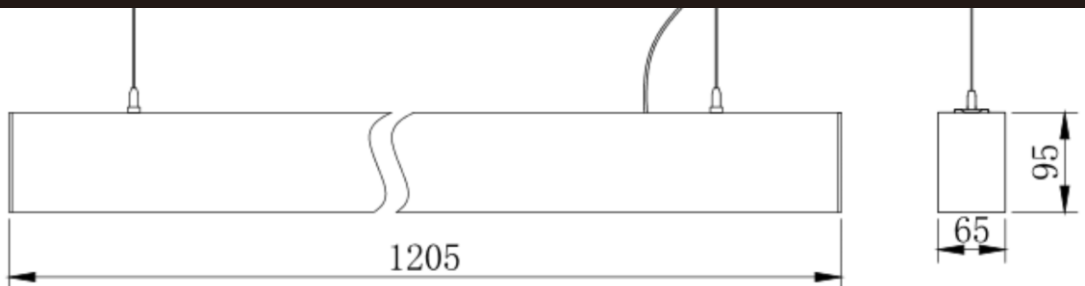
Applications:
 Offices and workspaces, conference and training rooms, educational institutions, receptions ,supermarkets(cashiers desks and paths),directional light from low heights of up to 5m/16.4'



ALUMINUM OFFICE LIGHTING



Overall Dimension



Model:ECO-CP12/1200x65x95mm

Electricity Parameter		Ray Parameter	
Input Power	28W	LED Quantity	2835:144x0.2W
Input Voltage	AC220-240V	Color Temperatur	4000K
Input Voltage	50/60Hz	Led Initial Flux	1100Lm
Input Voltage	≥ 0.95	Luminous Efficiency	40Lm/W
Input Voltage	85%	Color Rendering Index	Ra > 80
		Luminous Anlge	120°

Lamp Specs			
Lamp Material	Alu.	Overall Dimension	1200x65x95mm
lampshade Material	PC	IP Grade	IP20
Lamp Colour	Black/White	Working Temperature	-20°C~50°C
Power line	0.5mm ²	Working Life-span	20000h
Installation Size	N/A	Driver	3AAAConstantCurrent
Lamp Weight	2.6Kg	LED Chips	SMD2835

Remarks : Customizable wide voltage driver/customizable color



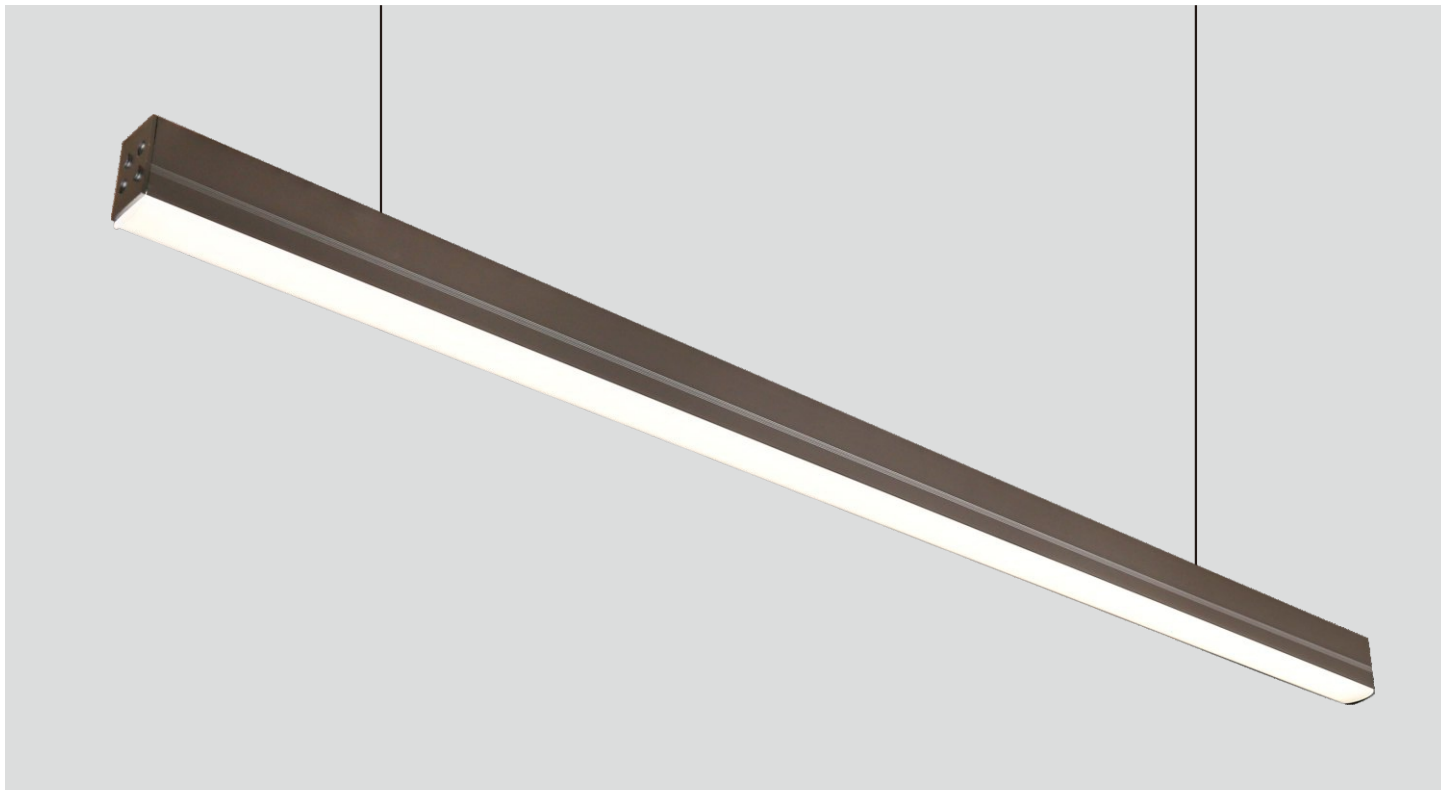
High brightness, uniform illumination, soft light



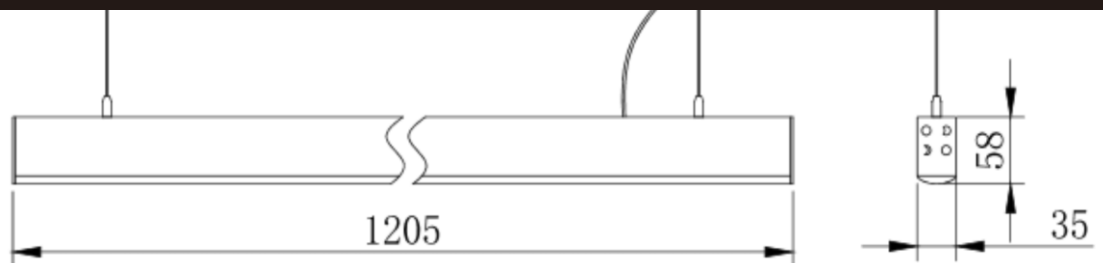
Applications:
Offices and workspaces, conference and training rooms, educational institutions, receptions ,supermarkets(cashiers desks and paths),directional light from low heights of up to 5m/16.4'



ALUMINUM OFFICE LIGHTING



Overall Dimension



Model:ECO-CP16/1200x35x58mm

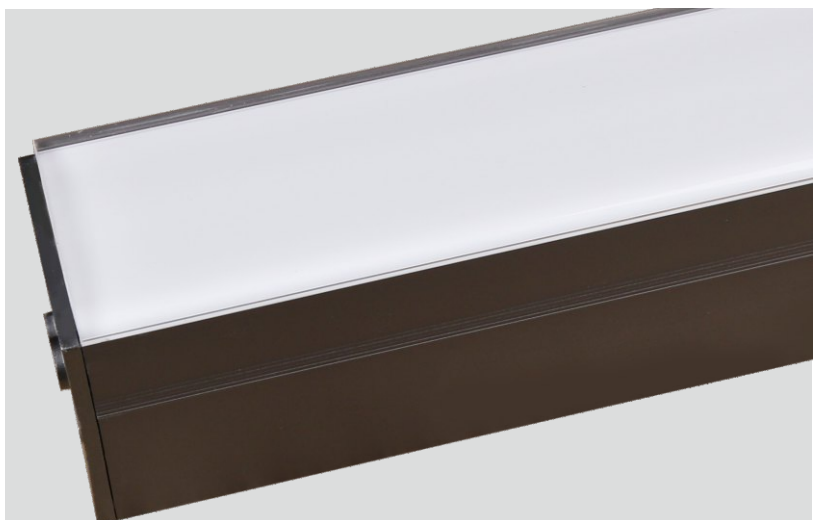
Electricity Parameter		Ray Parameter	
Input Power	28W	LED Quantity	2835:144x0.2W
Input Voltage	AC220-240V	Color Temperatur	4000K
Input Voltage	50/60Hz	Led Initial Flux	800Lm
Input Voltage	≥ 0.95	Luminous Efficiency	30Lm/W
Input Voltage	85%	Color Rendering Index	Ra > 80
		Luminous Anlge	120°

Lamp Specs			
Lamp Material	Alu.	Overall Dimension	1205x35x58mm
lampshade Material	PMMA	IP Grade	IP20
Lamp Colour	Black/White	Working Temperature	-20°C~50°C
Power line	0.5mm ²	Working Life-span	20000h
Installation Size	N/A	Driver	3AAAConstantCurrent
Lamp Weight	1.7Kg	LED Chips	SMD2835

Remarks : Customizable wide voltage driver/customizable color



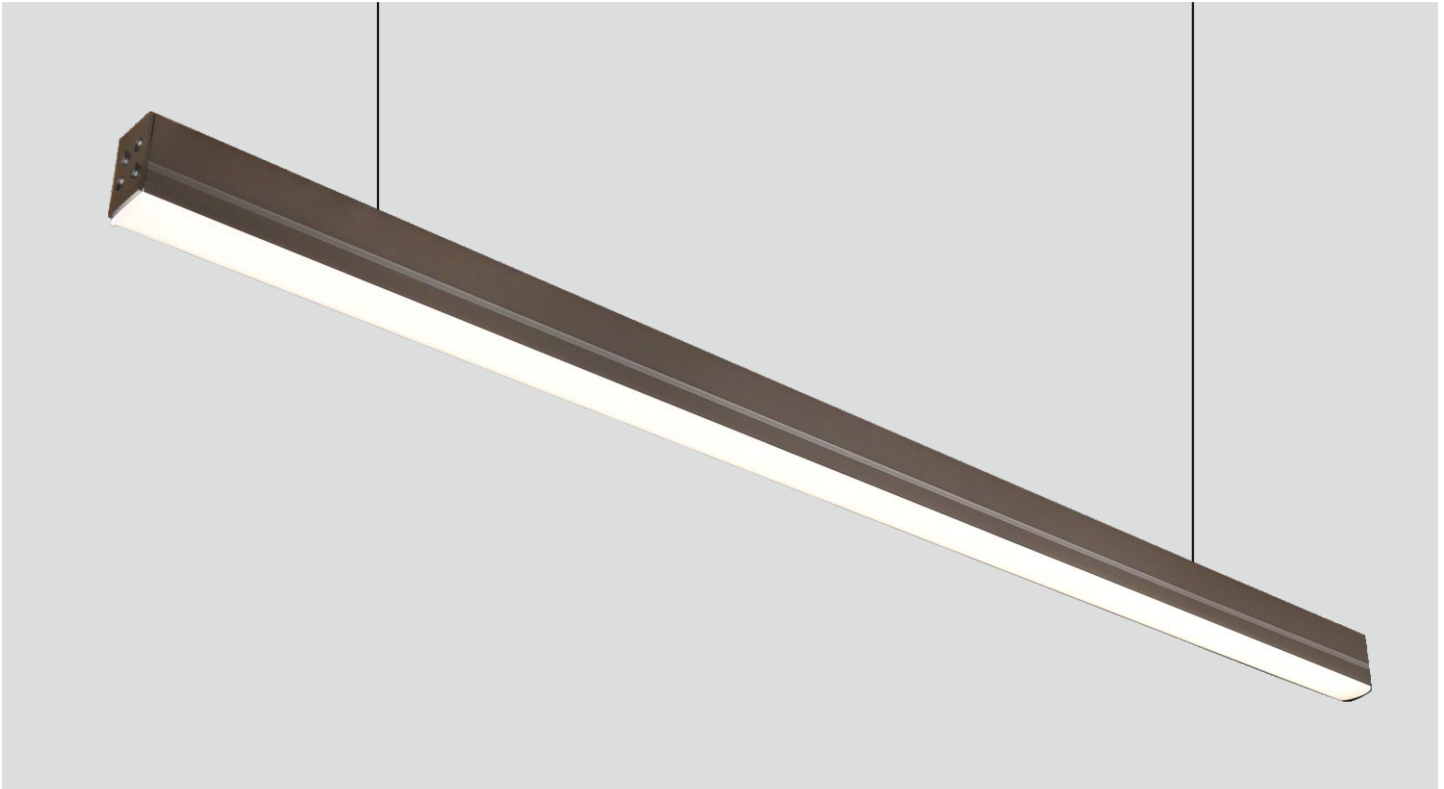
Uniform illumination, softer light, Translucent acrylic(PMMA) is more luxurious, more harmonious with the environment.



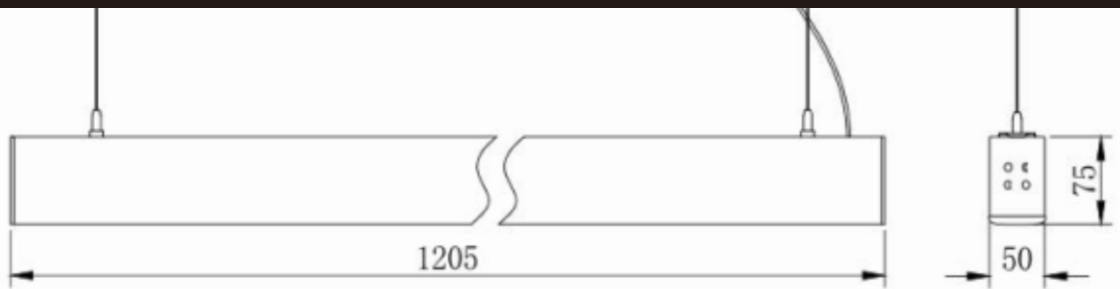
Applications:
Offices and workspaces, conference and training rooms,educational institutions,receptions ,supermarkets(cashiers desks and paths),directional light from low heights of up to 5m/16.4'



ALUMINUM OFFICE LIGHTING



Overall Dimension



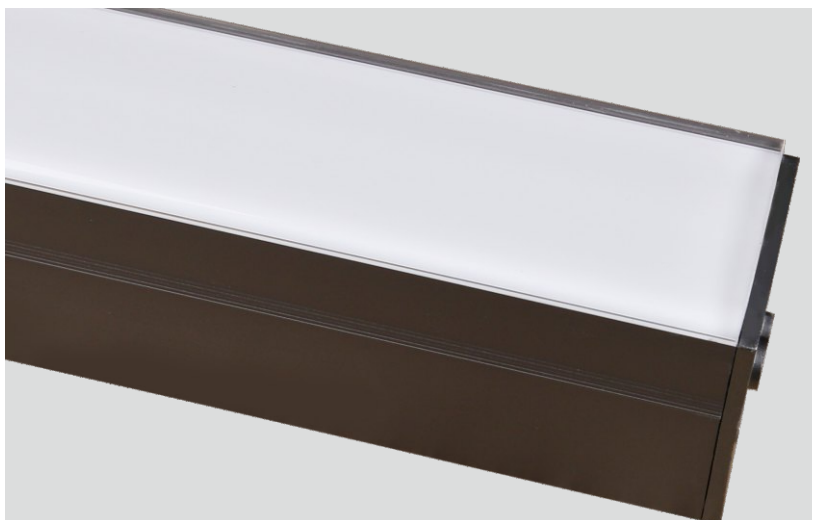
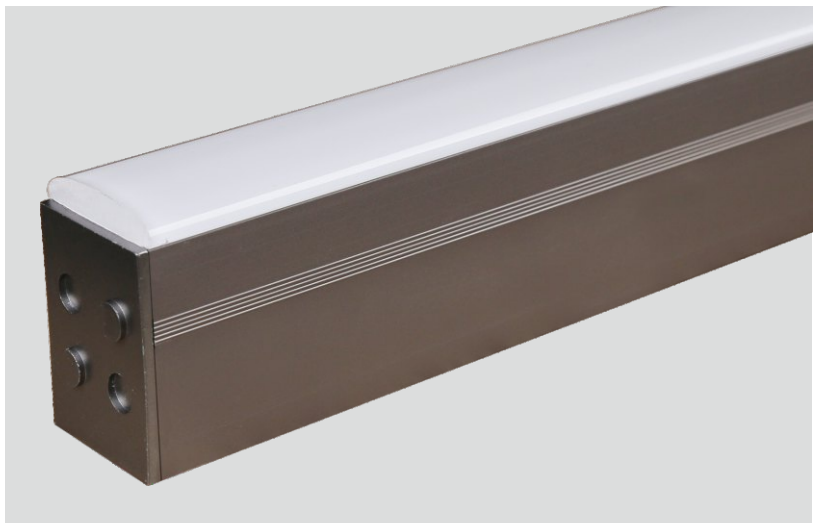
Model:ECO-CP18/1200x50x75mm

Electricity Parameter		Ray Parameter	
Input Power	28W	LED Quantity	2835 : 144x0.2W
Input Voltage	AC220-240V	Color Temperatur	4000K
Input Voltage	50/60Hz	Led Initial Flux	950Lm
Input Voltage	≥ 0.95	Luminous Efficiency	35Lm/W
Input Voltage	85%	Color Rendering Index	Ra > 80

Lamp Specs			
Lamp Material	Alu.	Overall Dimension	1205x50x75mm
lampshade Material	PMMA	IP Grade	IP20
Lamp Colour	Black/White	Working Temperature	-20°C~50°C
Power line	0.5mm ²	Working Life-span	20000h
Installation Size	N/A	Driver	3AAAConstantCurrent
Lamp Weight	2.7Kg	LED Chips	SMD2835

Remarks :

Uniform illumination, softer light, Translucent acrylic(PMMA) is more luxurious, more harmonious with the environment.



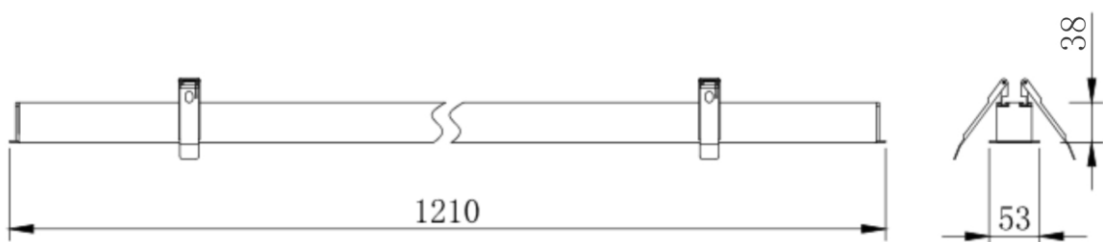
Applications:
Offices and workspaces, conference and training rooms, educational institutions, receptions ,supermarkets(cashiers desks and paths),directional light from low heights of up to 5m/16.4'



ALUMINUM OFFICE LIGHTING



Overall Dimension



Model:ECO-CP3/1200x53x38mm

Electricity Parameter		Ray Parameter	
Input Power	30W(Or 24W)	LED Quantity	2835:180X0.2W+5050:10x5W
Input Voltage	AC220-240V	Color Temperatur	4000K
Input Voltage	50/60Hz	Led Initial Flux	1350Lm
Input Voltage	≥ 0.95	Luminous Efficiency	45Lm/W
Input Voltage	85%	Color Rendering Index	Ra > 80

Lamp Specs			
Lamp Material	Alu.	Overall Dimension	1210x53x38mm
lampshade Material	PC	IP Grade	IP20
Lamp Colour	Black/White	Working Temperature	-20°C~50°C
Power line	0.5mm ²	Working Life-span	20000h
Installation Size	1200x45mm	Driver	3AAAConstantCurrent
Lamp Weight	1.3Kg	LED Chips	SMD2835/SMD5050

Remarks : Customizable wide voltage driver/customizable color



Efficient PC/reflector match high quality integrated optical lens, UGR(UGR<16), precision light control



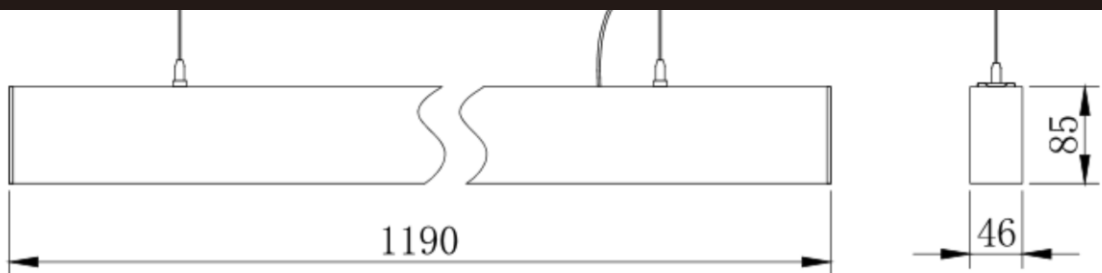
Applications:
Offices and workspaces, conference and training rooms,educational institutions,receptions ,supermarkets(cashiers desks and paths),directional light from low heights of up to 5m/16.4'



ALUMINUM OFFICE LIGHTING



Overall Dimension



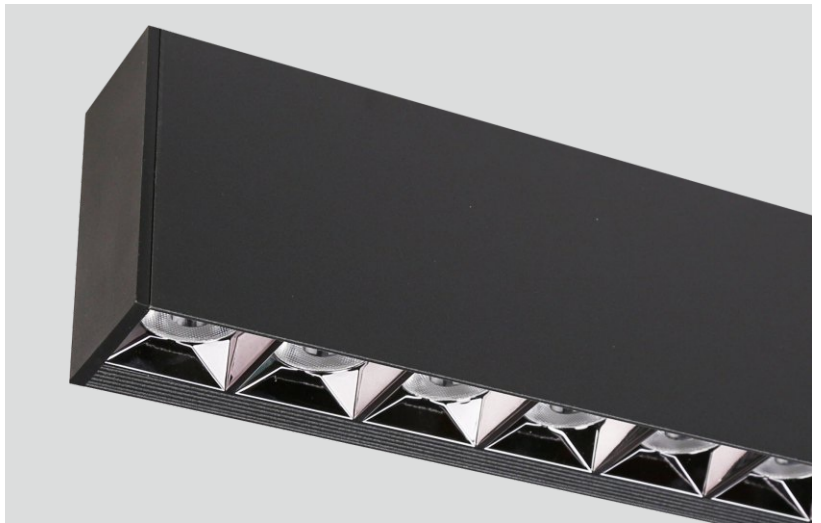
Model:ECO-CP4/1200x46x85mm

Electricity Parameter		Ray Parameter	
Input Power	36W(OR 28W)	LED Quantity	5050:15x5W
Input Voltage	AC220-240V	Color Temperatur	4000K
Input Voltage	50/60Hz	Led Initial Flux	3000Lm
Input Voltage	≥ 0.95	Luminous Efficiency	85Lm/W
Input Voltage	85%	Color Rendering Index	Ra > 80

Lamp Specs			
Lamp Material	Alu.	Overall Dimension	1190x46x85mm
lampshade Material	PC	IP Grade	IP20
Lamp Colour	Black/White	Working Temperature	-20°C~50°C
Power line	0.5mm ²	Working Life-span	20000h
Installation Size	N/A	Driver	3AAA Constant Current
Lamp Weight	2.8Kg	LED Chips	SMD5050

Remarks : Customizable wide voltage driver/customizable color

Efficient PC/reflector match high quality integrated optical lens, UGR(UGR<16), precision light control



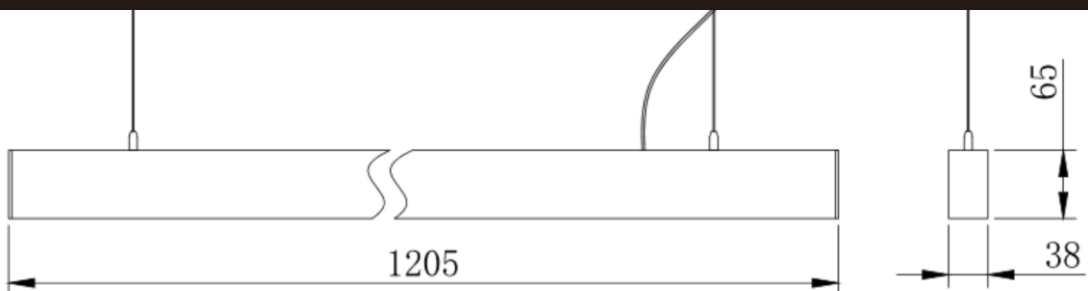
Applications:
Offices and workspaces, conference and training rooms, educational institutions, receptions ,supermarkets(cashiers desks and paths),directional light from low heights of up to 5m/16.4'



ALUMINUM OFFICE LIGHTING



Overall Dimension



Model:ECO-CP6/1200x38x65mm

Electricity Parameter		Ray Parameter	
Input Power	24W(or 30W)	LED Quantity	2835:120x0.2W+3030:20x1W
Input Voltage	AC220-240V	Color Temperatur	4000K
Input Voltage	50/60Hz	Led Initial Flux	1200Lm
Input Voltage	≥ 0.95	Luminous Efficiency	50Lm/W
Input Voltage	85%	Color Rendering Index	Ra > 80

Lamp Specs			
Lamp Material	Alu.	Overall Dimension	1205x38x65mm
lampshade Material	PC	IP Grade	IP20
Lamp Colour	Black/White	Working Temperature	-20°C~50°C
Power line	0.5mm ²	Working Life-span	20000h
Installation Size	N/A	Driver	3AAAConstantCurrent
Lamp Weight	1.6Kg	LED Chips	

Remarks : Customizable wide voltage driver/customizable color



Efficient PC/reflector match high quality integrated optical lens, UGR(UGR<16), precision light control



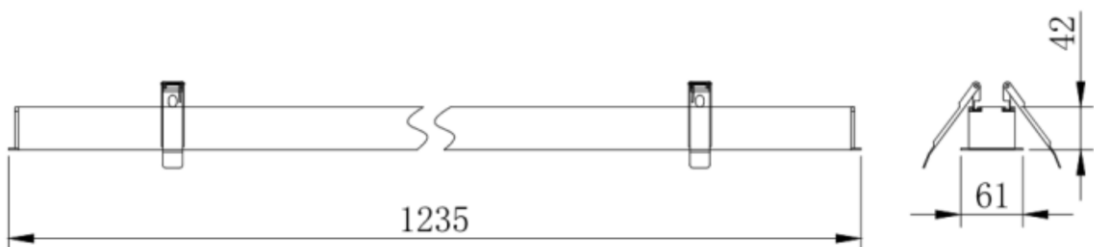
Applications:
 Offices and workspaces, conference and training rooms,educational institutions,receptions ,supermarkets(cashiers desks and paths),directional light from low heights of up to 5m/16.4'



ALUMINUM OFFICE LIGHTING



Overall Dimension



Model:ECO-CP5/1200x61x42mm

Electricity Parameter		Ray Parameter	
Input Power	36W(OR 30W)	LED Quantity	5050 : 20x5W
Input Voltage	AC220-240V	Color Temperatur	4000K
Input Voltage	50/60Hz	Led Initial Flux	3200Lm
Input Voltage	≥ 0.95	Luminous Efficiency	90Lm/W
Input Voltage	85%	Color Rendering Index	Ra > 80
		Luminous Anlge	12°/24°38°/50°/50°x50°/ 35x70°/70°x70°

Lamp Specs			
Lamp Material	Alu.	Overall Dimension	1235x61x42mm
lampshade Material	PC	IP Grade	IP20
Lamp Colour	Black/White	Working Temperature	-20°C~50°C
Power line	0.5mm ²	Working Life-span	20000h
Installation Size	1225x50mm	Driver	3AAAConstantCurrent
Lamp Weight	1.9Kg	LED Chips	SMD5050

Remarks : Customizable wide voltage driver/customizable color



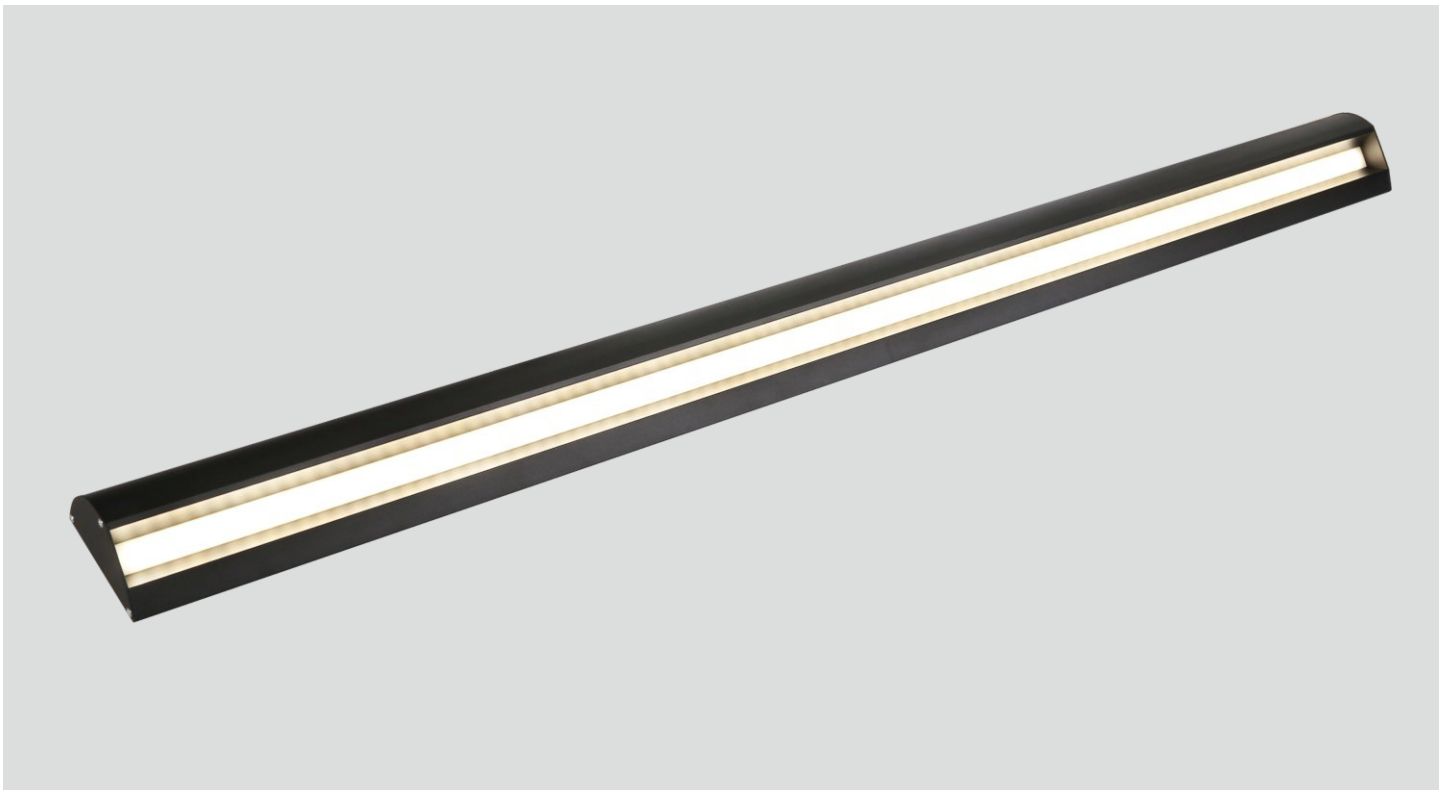
Efficient PC/reflector match high quality integrated optical lens, UGR(UGR<16), precision light control



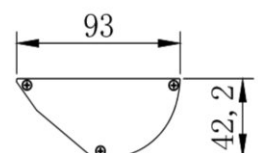
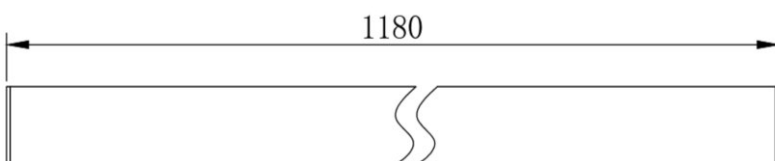
Applications:
Offices and workspaces, conference and training rooms,educational institutions,receptions ,supermarkets(cashiers desks and paths),directional light from low heights of up to 5m/16.4'



ALUMINUM OFFICE LIGHTING



Overall Dimension



Model:ECO-CP9/1200x93x42mm

Electricity Parameter		Ray Parameter	
Input Power	36W	LED Quantity	2835:96X0.5W
Input Voltage	AC220-240V	Color Temperatur	4000K
Input Voltage	50/60Hz	Led Initial Flux	2500Lm
Input Voltage	≥ 0.95	Luminous Efficiency	70Lm/W
Input Voltage	85%	Color Rendering Index	Ra > 80
		Luminous Anlge	120°

Lamp Specs			
Lamp Material	Alu.	Overall Dimension	1180*93*42mm
lampshade Material	PS	IP Grade	IP20
Lamp Colour	Black/White	Working Temperature	-20°C~50°C
Power line	0.5mm ²	Working Life-span	20000h
Installation Size	N/A	Driver	3AAAConstantCurrent
Lamp Weight	1.6Kg	LED Chips	SMD2835

Remarks : Customizable wide voltage driver/customizable color

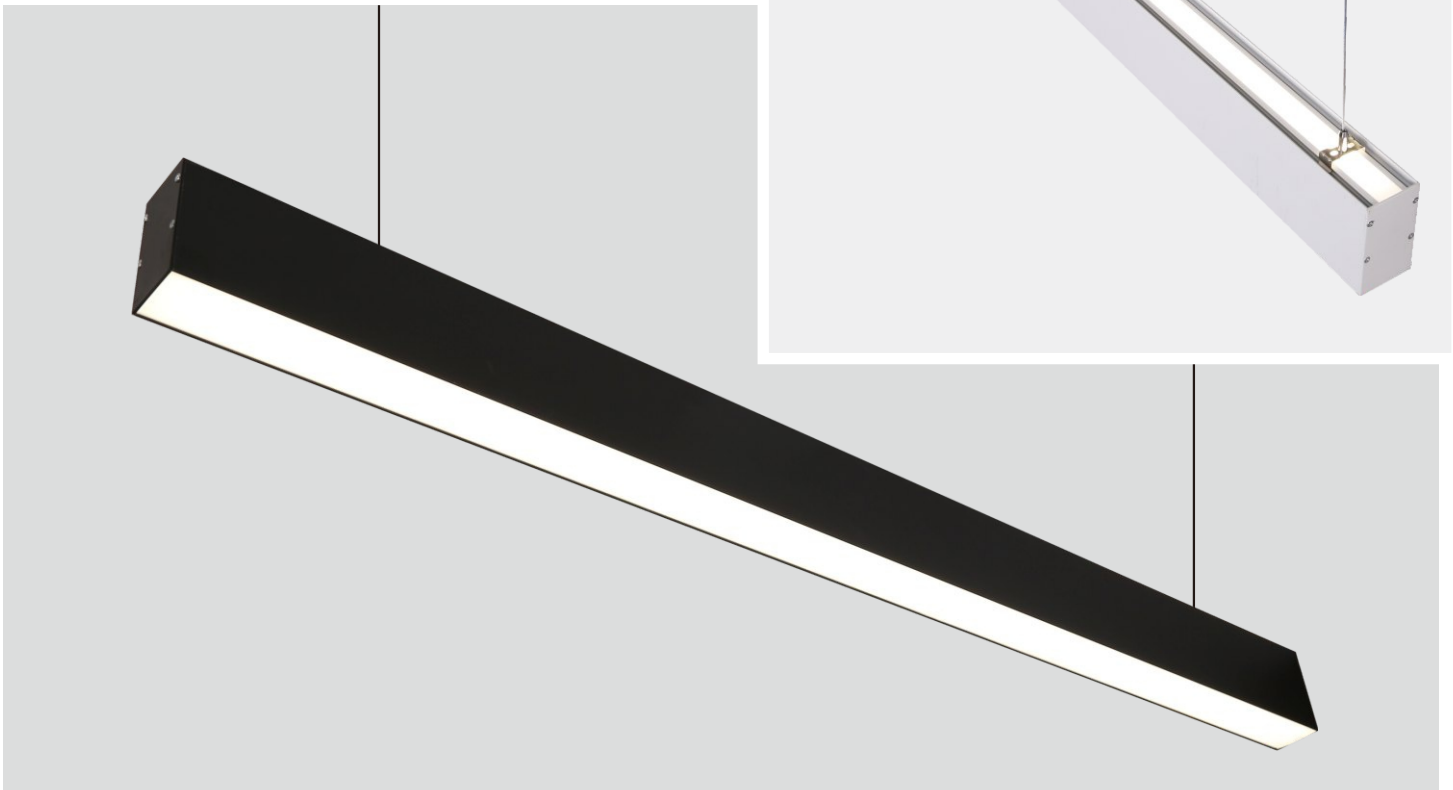
High brightness, uniform illumination, soft light



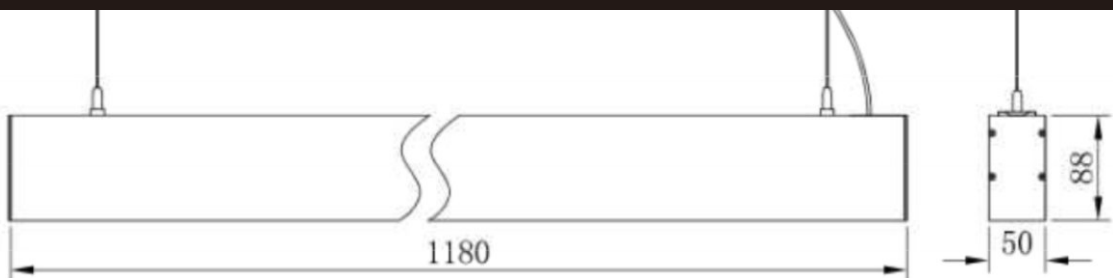
Applications:
Offices and workspaces, conference and training rooms, educational institutions, receptions ,supermarkets (cashiers desks and paths), directional light from low heights of up to 5m/16.4'



ALUMINUM OFFICE LIGHTING



Overall Dimension



Model:ECO-CP21/1200x50x88mm

Electricity Parameter		Ray Parameter	
Input Power	36W	LED Quantity	2835:288X0.2W
Input Voltage	AC220-240V	Color Temperatur	4000K
Input Voltage	50/60Hz	Led Initial Flux	2500Lm
Input Voltage	≥ 0.95	Luminous Efficiency	70Lm/W
Input Voltage	85%	Color Rendering Index	Ra > 80
		Luminous Anlge	120°

Lamp Specs			
Lamp Material	Alu.	Overall Dimension	1180x50x88mm
lampshade Material	PC	IP Grade	IP20
Lamp Colour	Black/White	Working Temperature	-20°C~50°C
Power line	0.5mm ²	Working Life-span	20000h
Installation Size	N/A	Driver	3AAAConstantCurrent
Lamp Weight	2.1Kg	LED Chips	SMD2835

Remarks : Customizable wide voltage driver/customizable color

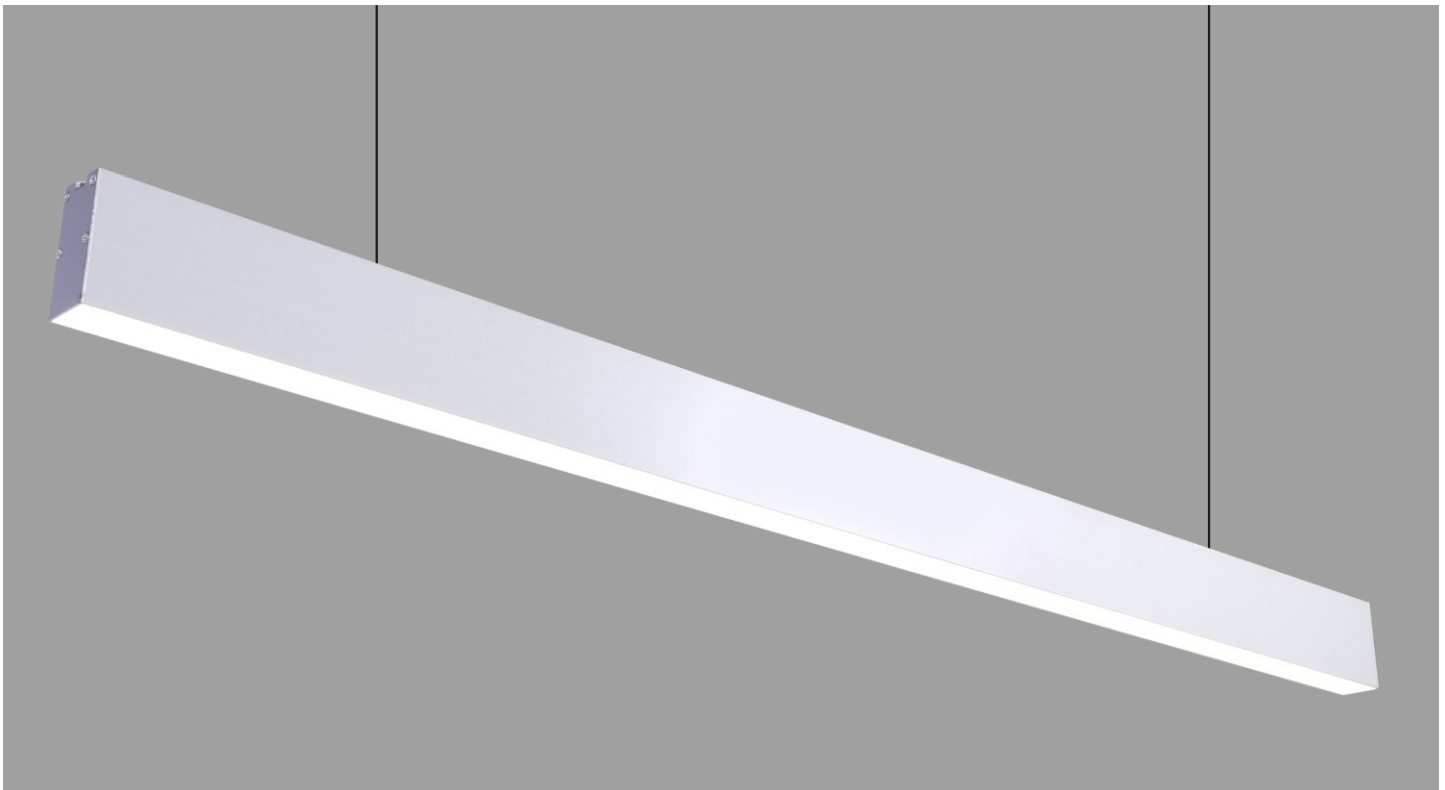
High brightness, uniform illumination, soft light



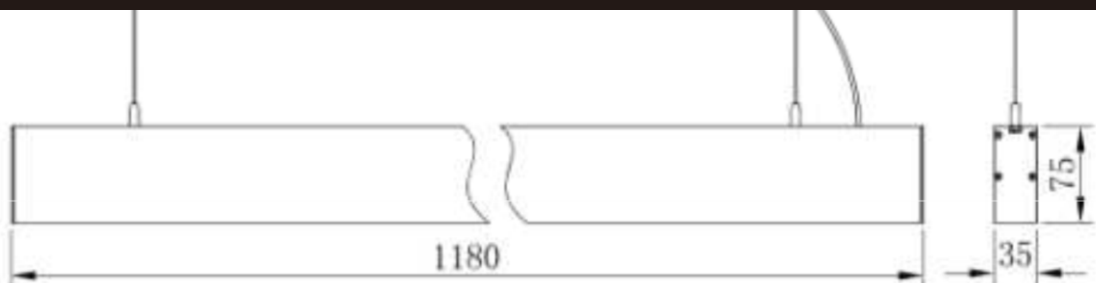
Applications:
Offices and workspaces, conference and training rooms, educational institutions, receptions ,supermarkets(cashiers desks and paths),directional light from low heights of up to 5m/16.4'



ALUMINUM OFFICE LIGHTING



Overall Dimension



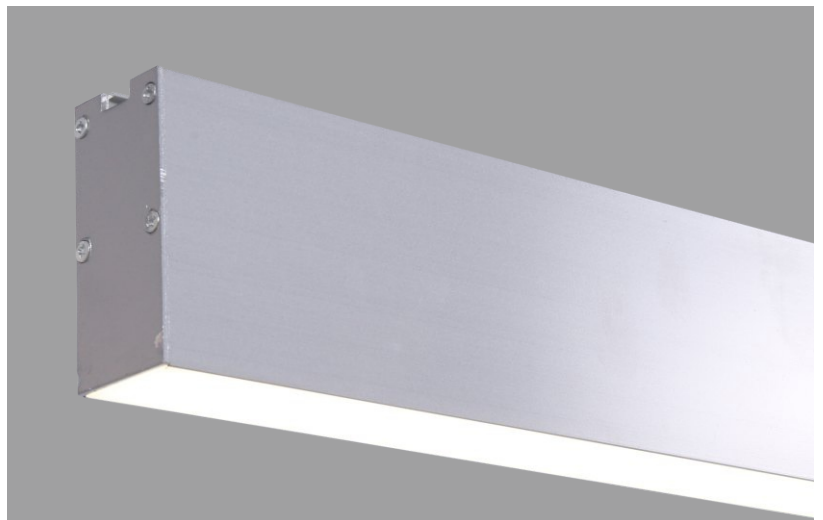
Model:ECO-CP26/1200x35x75mm

Electricity Parameter		Ray Parameter	
Input Power	28W	LED Quantity	2835:168X0.2W
Input Voltage	AC220-240V	Color Temperatur	4000K
Input Voltage	50/60Hz	Led Initial Flux	1100Lm
Input Voltage	≥ 0.95	Luminous Efficiency	40Lm/W
Input Voltage	85%	Color Rendering Index	Ra > 80
		Luminous Anlge	120°

Lamp Specs			
Lamp Material	Alu.	Overall Dimension	1180x35x75mm
lampshade Material	PS	IP Grade	IP20
Lamp Colour	Black/White	Working Temperature	-20°C~50°C
Power line	0.5mm ²	Working Life-span	20000h
Installation Size	N/A	Driver	3AAAConstantCurrent
Lamp Weight	1.5Kg	LED Chips	SMD2835

Remarks : Customizable wide voltage driver/customizable color

High brightness, uniform illumination, soft light



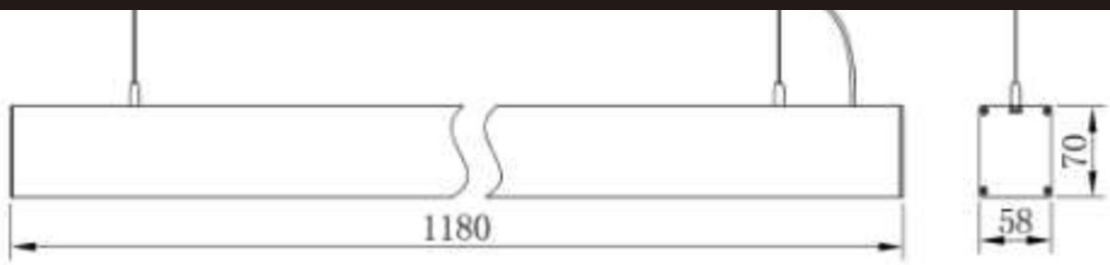
Applications:
 Offices and workspaces, conference and training rooms,educational institutions,receptions ,supermarkets(cashiers desks and paths),directional light from low heights of up to 5m/16.4'



ALUMINUM OFFICE LIGHTING



Overall Dimension



Model:ECO-CP58/1200x58x70mm

Electricity Parameter		Ray Parameter	
Input Power	28W	LED Quantity	2835:168X0.2W
Input Voltage	AC220-240V	Color Temperatur	4000K
Input Voltage	50/60Hz	Led Initial Flux	1100Lm
Input Voltage	≥ 0.95	Luminous Efficiency	70Lm/W
Input Voltage	85%	Color Rendering Index	Ra > 80
		Luminous Anlge	120°

Lamp Specs			
Lamp Material	Alu.	Overall Dimension	1180x58x70mm
lampshade Material	PS	IP Grade	IP20
Lamp Colour	Black/White	Working Temperature	-20°C~50°C
Power line	0.5mm ²	Working Life-span	20000h
Installation Size	N/A	Driver	3AAAConstantCurrent
Lamp Weight	1.6Kg	LED Chips	SMD2835

Remarks : Customizable wide voltage driver/customizable color

High brightness, uniform illumination, soft light

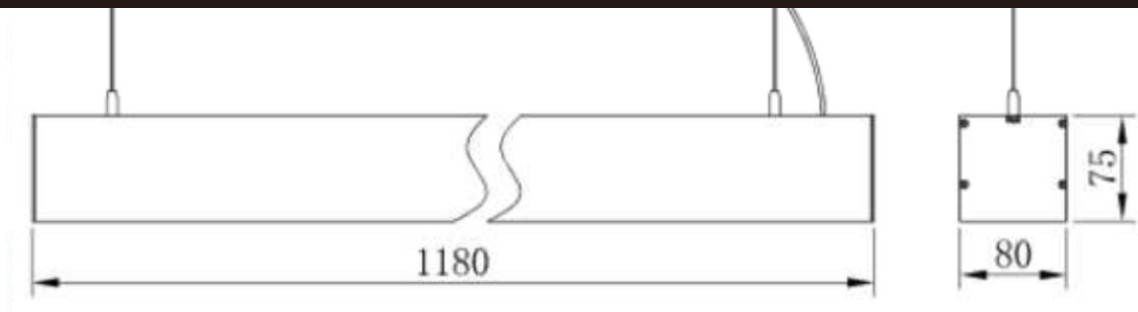


Applications:
Offices and workspaces, conference and training rooms, educational institutions, receptions ,supermarkets (cashiers desks and paths), directional light from low heights of up to 5m/16.4'

ALUMINUM OFFICE LIGHTING



Overall Dimension



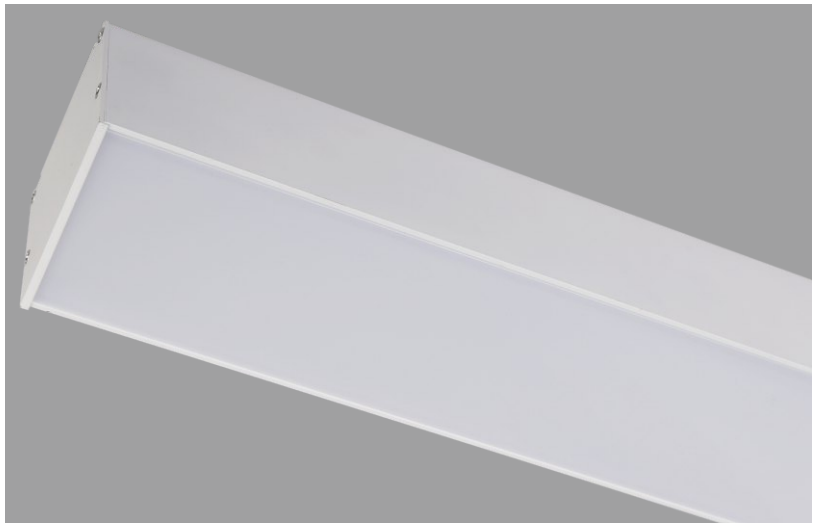
Model:ECO-CP56/1200x80x75mm

Electricity Parameter		Ray Parameter	
Input Power	36W	LED Quantity	835:192X0.2W
Input Voltage	AC220-240V	Color Temperatur	4000K
Input Voltage	50/60Hz	Led Initial Flux	2500Lm
Input Voltage	≥ 0.95	Luminous Efficiency	70Lm/W
Input Voltage	85%	Color Rendering Index	Ra > 80
		Luminous Anlge	120°

Lamp Specs			
Lamp Material	Alu.	Overall Dimension	1180x80x75mm
lampshade Material	PS	IP Grade	IP20
Lamp Colour	Black/White	Working Temperature	-20°C~50°C
Power line	0.5mm ²	Working Life-span	20000h
Installation Size	N/A	Driver	3AAAConstantCurrent
Lamp Weight	2.2Kg	LED Chips	SMD2835

Remarks : Customizable wide voltage driver/customizable color

High brightness, uniform illumination, soft light



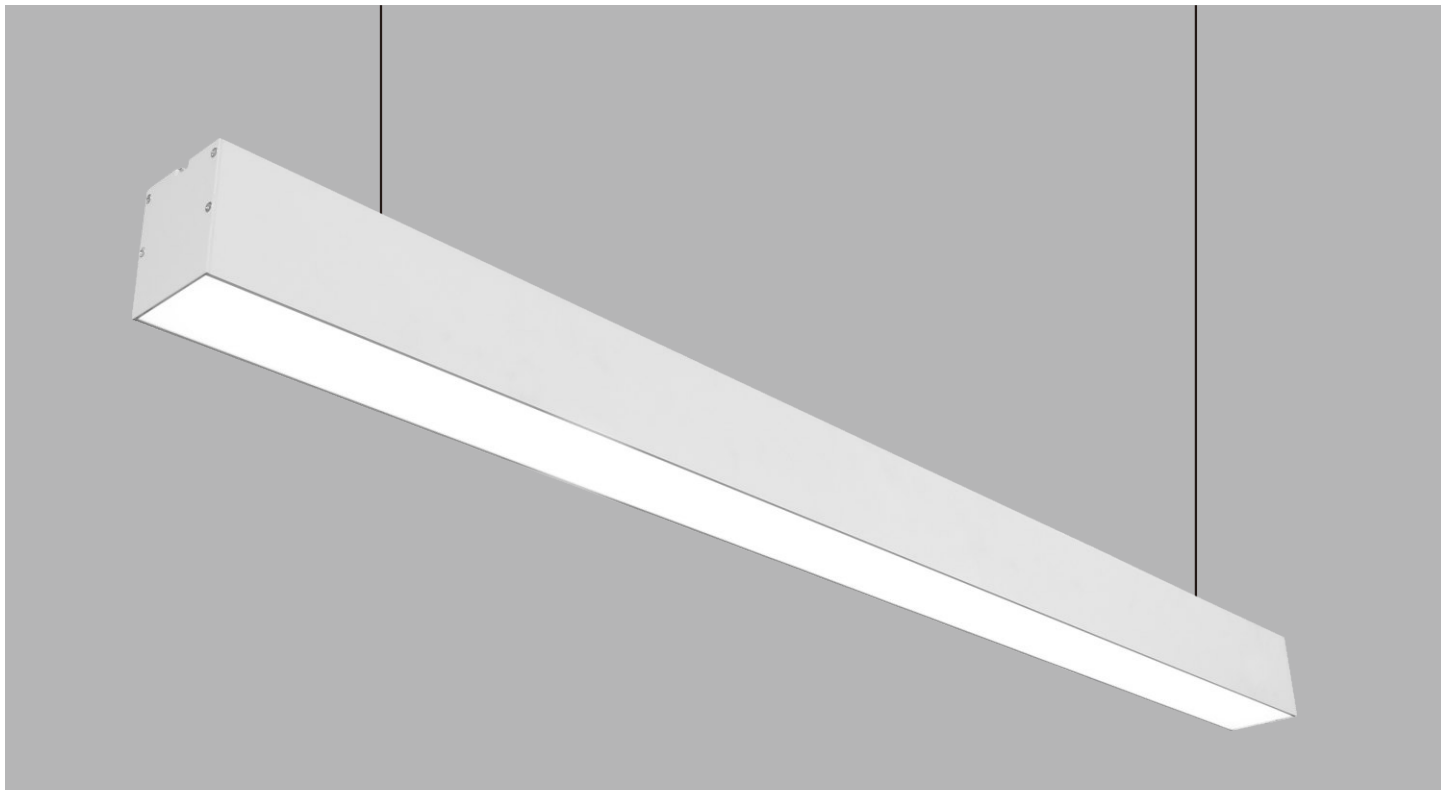
Applications:
 Offices and workspaces, conference and training rooms,educational institutions,receptions ,supermarkets(cashiers desks and paths),directional light from low heights of up to 5m/16.4'



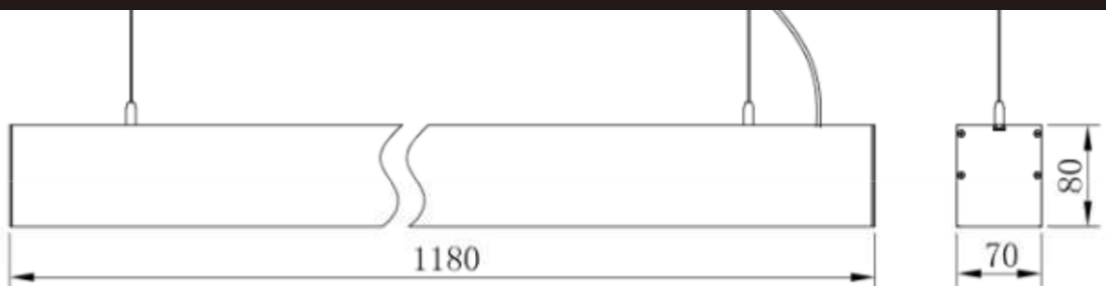
ALUMINUM OFFICE LIGHTING

M.TC

NO BUSINESS, NO FOLLOW



Overall Dimension



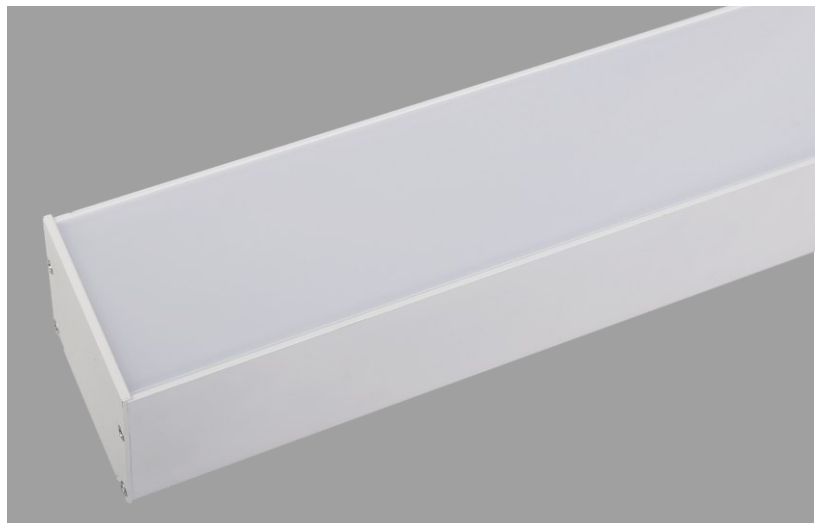
Model:ECO-CP52/1200x70x80mm

Electricity Parameter		Ray Parameter	
Input Power	28W	LED Quantity	2835:192X0.2W
Input Voltage	AC220-240V	Color Temperatur	4000K
Input Voltage	50/60Hz	Led Initial Flux	1650Lm
Input Voltage	≥ 0.95	Luminous Efficiency	60Lm/W
Input Voltage	85%	Color Rendering Index	Ra > 80
		Luminous Anlge	120°

Lamp Specs			
Lamp Material	Alu.	Overall Dimension	1180x70x80mm
lampshade Material	PS	IP Grade	IP20
Lamp Colour	Black/White	Working Temperature	-20°C~50°C
Power line	0.5mm ²	Working Life-span	20000h
Installation Size	N/A	Driver	3AAAConstantCurrent
Lamp Weight	2.2Kg	LED Chips	SMD2835

Remarks : Customizable wide voltage driver/customizable color

High brightness, uniform illumination, soft light



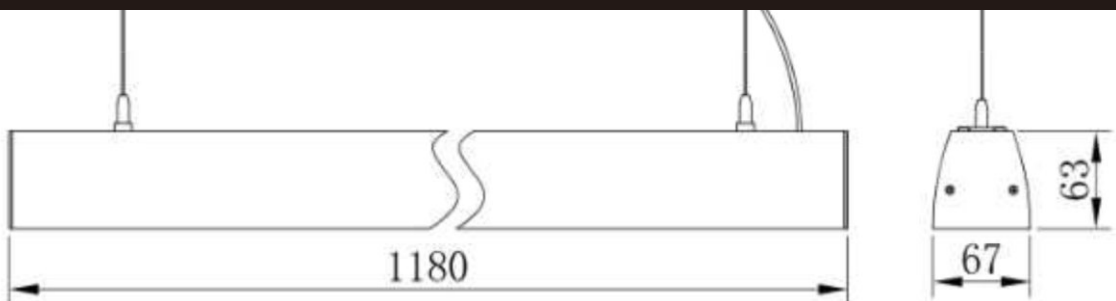
Applications:
 Offices and workspaces, conference and training rooms, educational institutions, receptions ,supermarkets(cashiers desks and paths),directional light from low heights of up to 5m/16.4'



ALUMINUM OFFICE LIGHTING



Overall Dimension

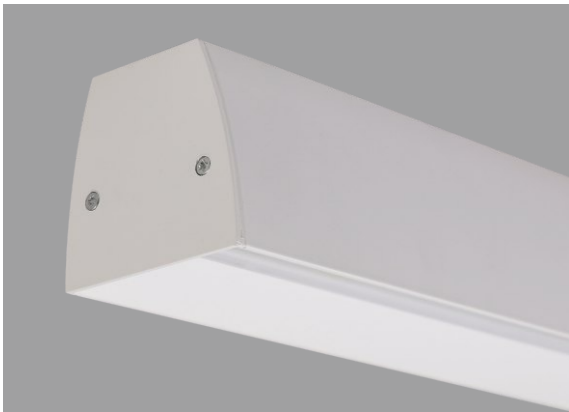


Model:ECO-CP45/1200x67x63mm

Electricity Parameter		Ray Parameter	
Input Power	42W	LED Quantity	2835:264X0.2W
Input Voltage	AC220-240V	Color Temperatur	4000K
Input Voltage	50/60Hz	Led Initial Flux	3500Lm
Input Voltage	≥ 0.95	Luminous Efficiency	85Lm/W
Input Voltage	85%	Color Rendering Index	Ra > 80
		Luminous Anlge	

Lamp Specs			
Lamp Material	Alu.	Overall Dimension	1180x67x63mm
lampshade Material	PS+PMMA	IP Grade	IP20
Lamp Colour	White	Working Temperature	-20°C~50°C
Power line	0.5mm ²	Working Life-span	20000h
Installation Size	N/A	Driver	3AAAConstantCurrent
Lamp Weight	2.1Kg	LED Chips	SMD2835

Remarks : Customizable wide voltage driver/customizable color



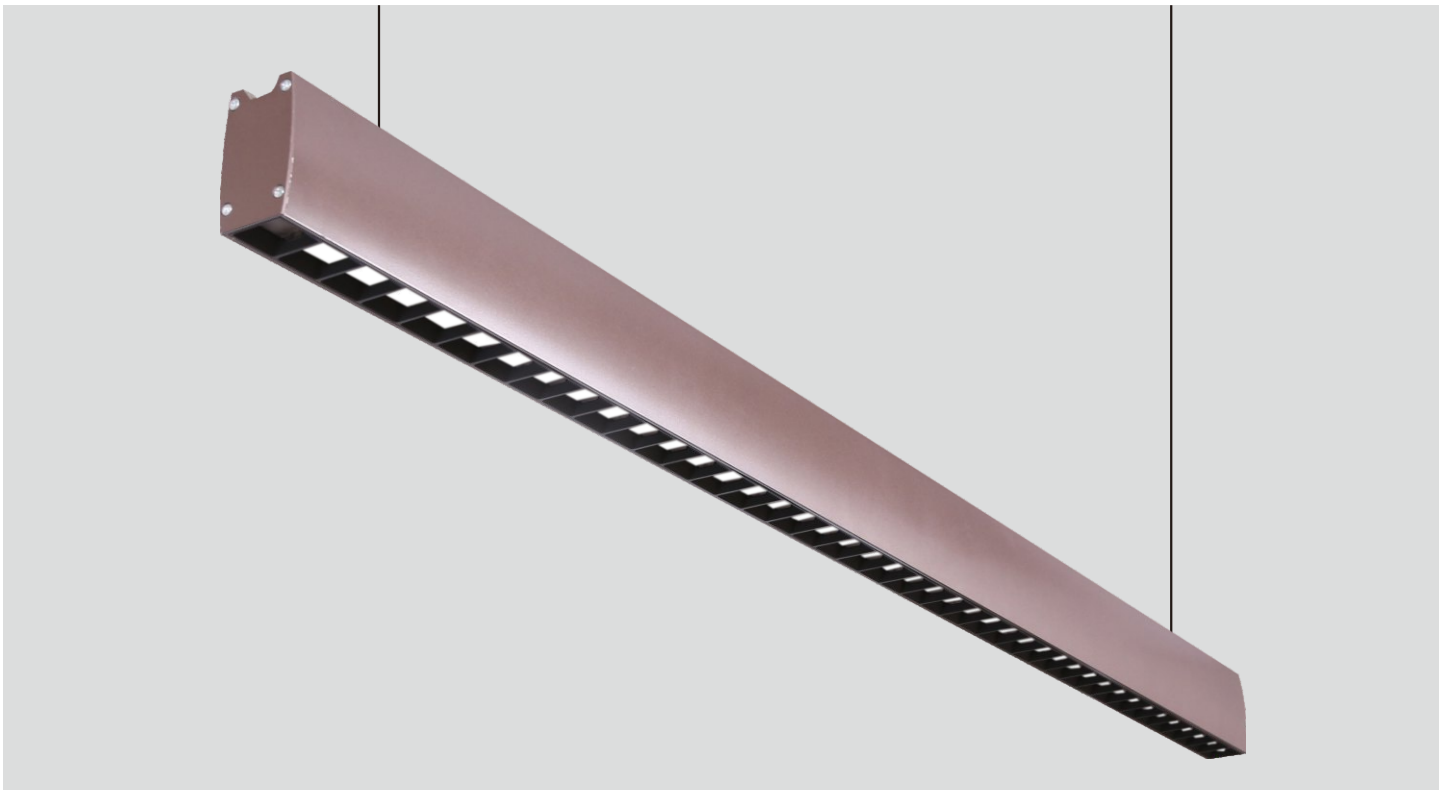
High brightness, uniform illumination, soft light



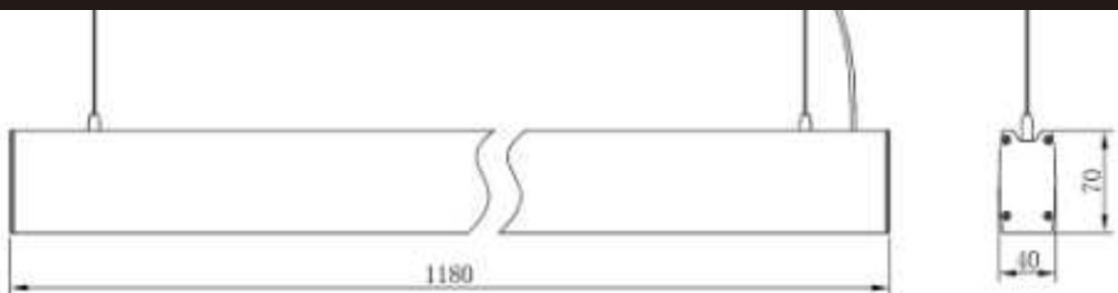
Applications:
 Offices and workspaces, conference and training rooms, educational institutions, receptions ,supermarkets(cashiers desks and paths),directional light from low heights of up to 5m/16.4'



ALUMINUM OFFICE LIGHTING



Overall Dimension



Model:ECO-CP42/1200x40x70mm

Electricity Parameter		Ray Parameter	
Input Power	36W	LED Quantity	2835 : 42X1W
Input Voltage	AC220-240V	Color Temperatur	4000K
Input Voltage	50/60Hz	Led Initial Flux	2850Lm
Input Voltage	≥ 0.95	Luminous Efficiency	80Lm/W
Input Voltage	85%	Color Rendering Index	Ra > 80
		Luminous Anlge	

Lamp Specs			
Lamp Material	Alu.	Overall Dimension	1180*40*70mm
lampshade Material	PC	IP Grade	IP20
Lamp Colour		Working Temperature	-20°C~50°C
Power line	0.5mm ²	Working Life-span	20000h
Installation Size	N/A	Driver	3AAAConstantCurrent
Lamp Weight	2.1Kg	LED Chips	SMD2835

Remarks : Customizable wide voltage driver/customizable color



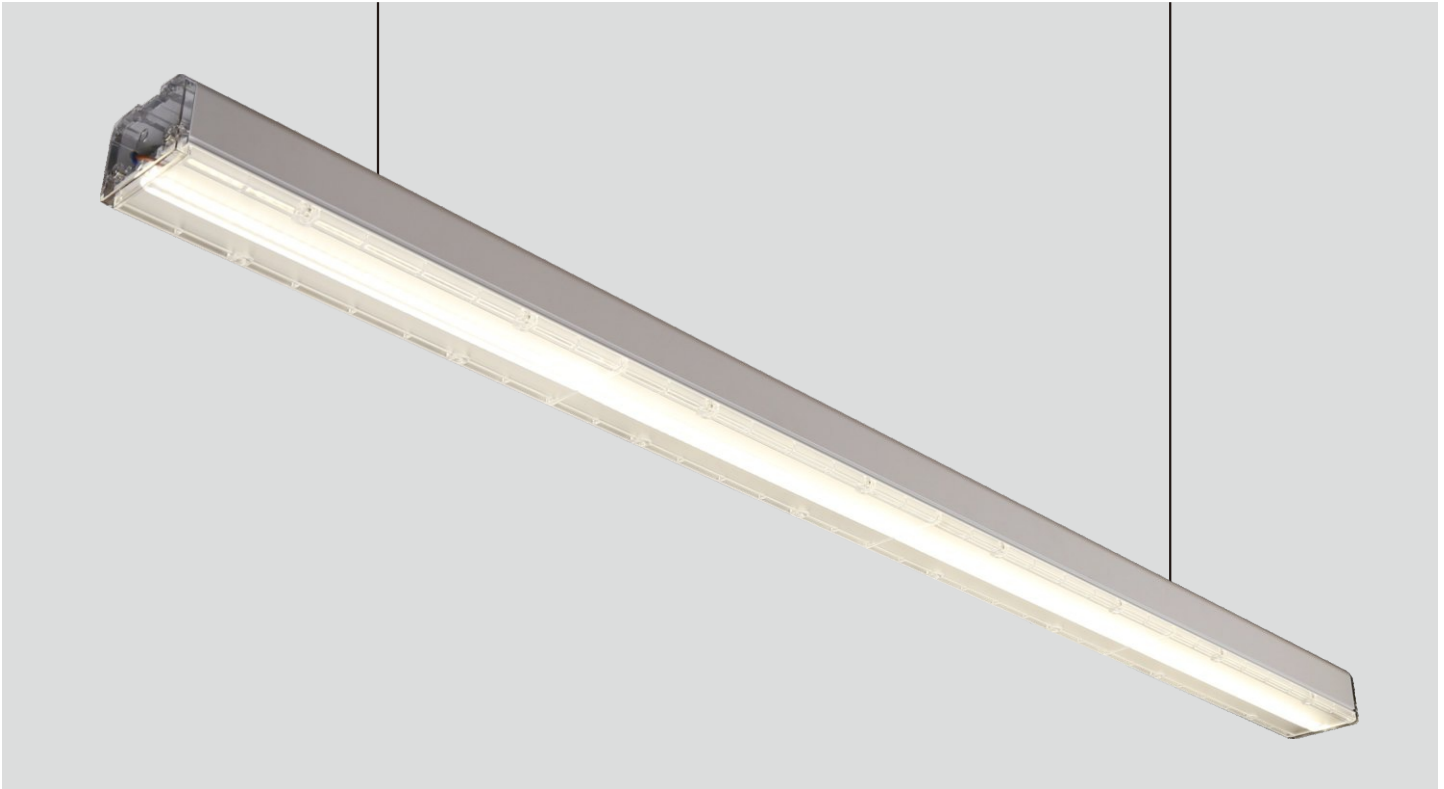
Efficient PC/reflector match high quality integrated optical lens, UGR(UGR<16), precision light control



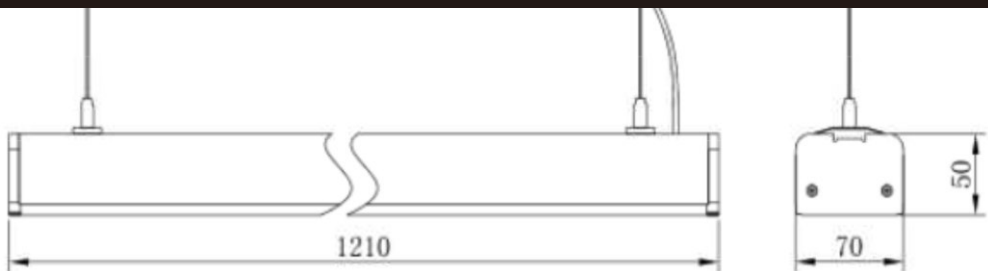
Applications:
Offices and workspaces, conference and training rooms,educational institutions,receptions ,supermarkets(cashiers desks and paths),directional light from low heights of up to 5m/16.4'



ALUMINUM OFFICE LIGHTING



Overall Dimension



Model:ECO-CP40/1200x70x50mm

Electricity Parameter		Ray Parameter	
Input Power	36W	LED Quantity	2835 : 168X0.5W
Input Voltage	AC220-240V	Color Temperatur	4000K
Input Voltage	50/60Hz	Led Initial Flux	3600Lm
Input Voltage	≥ 0.95	Luminous Efficiency	100Lm/W
Input Voltage	85%	Color Rendering Index	Ra > 80
		Luminous Anlge	120°

Lamp Specs			
Lamp Material	Alu.	Overall Dimension	1205*70*50mm
lampshade Material	PMMA	IP Grade	IP20
Lamp Colour	White	Working Temperature	-20°C~50°C
Power line	0.5mm ²	Working Life-span	20000h
Installation Size	N/A	Driver	3AAAConstantCurrent
Lamp Weight	2.1Kg	LED Chips	SMD2835

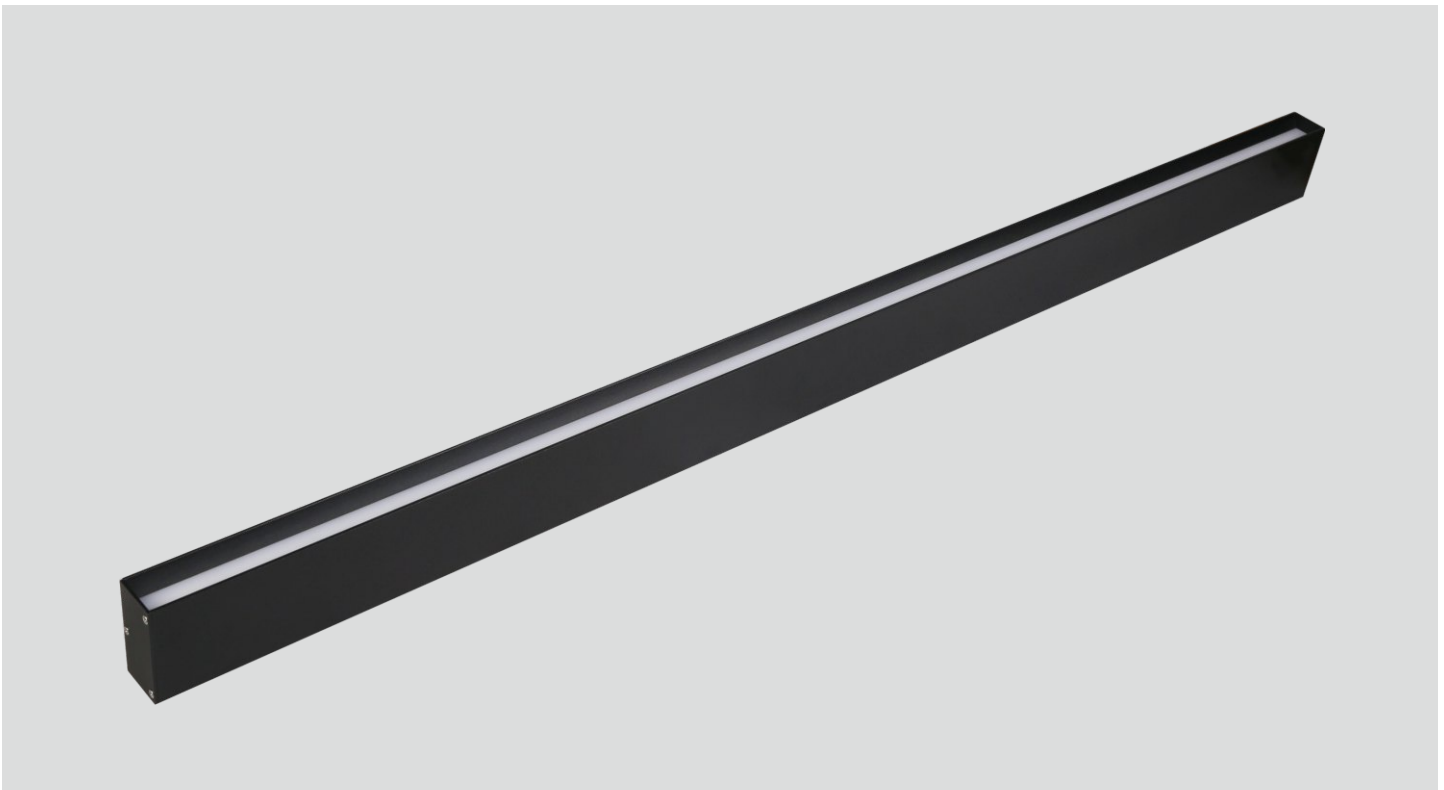
Remarks : Customizable wide voltage driver/customizable color

High brightness, uniform illumination, soft light

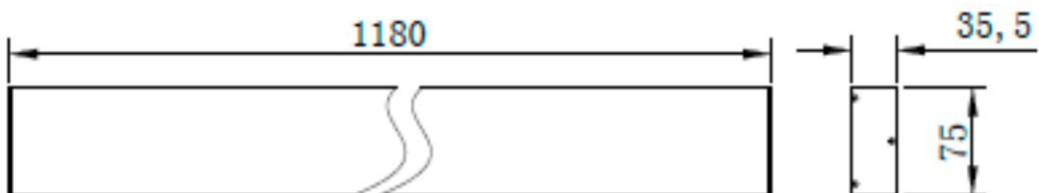


Applications:
 Offices and workspaces, conference and training rooms, educational institutions, receptions ,supermarkets (cashiers desks and paths), directional light from low heights of up to 5m/16.4'

ALUMINUM OFFICE LIGHTING



Overall Dimension

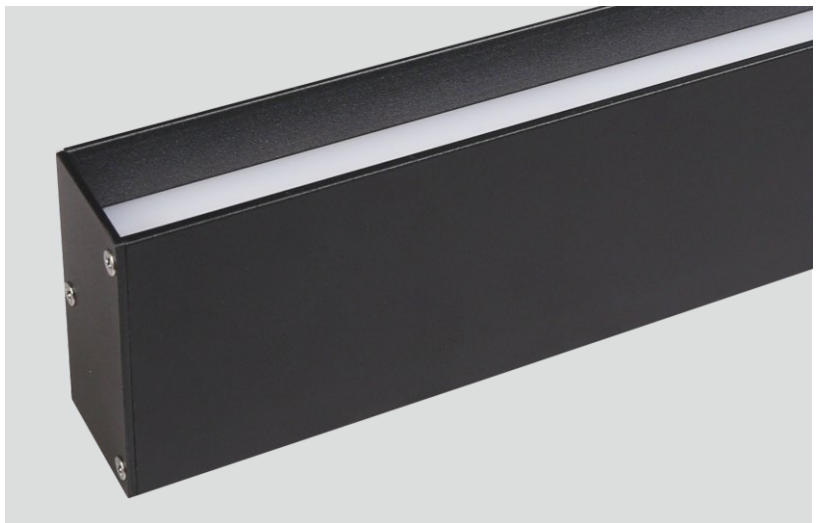


Model:ECO-CP27/1200x75x35mm

Electricity Parameter		Ray Parameter	
Input Powe	36W	LED Quantity	2835:192X0.5W
Input Voltage	AC220-240V	Color Temperatur	4000K
Input Voltage	50/60Hz	Led Initial Flux	2500Lm
Input Voltage	≥ 0.95	Luminous Efficiency	70Lm/W
Input Voltage	85%	Color Rendering Index	Ra > 80
		Luminous Anlge	120°

Lamp Specs			
Lamp Material	Alu.	Overall Dimension	1180x75x35mm
lampshade Material	PS	IP Grade	IP20
Lamp Colour	Black/White	Working Temperature	-20°C~50°C
Power line	0.5mm ²	Working Life-span	20000h
Installation Size	N/A	Driver	3AAAConstantCurrent
Lamp Weight	1.4Kg	LED Chips	SMD2835

Remarks : Customizable wide voltage driver/customizable color



High brightness, uniform illumination, soft light



Applications:
 Offices and workspaces, conference and training rooms,educational institutions,receptions ,supermarkets(cashiers desks and paths),directional light from low heights of up to 5m/16.4'